



# Government Gazette Staatskoerant

REPUBLIC OF SOUTH AFRICA  
REPUBLIEK VAN SUID AFRIKA

Vol. 709

12

July  
Julie

2024

No. 50925

N.B. The Government Printing Works will not be held responsible for the quality of "Hard Copies" or "Electronic Files" submitted for publication purposes

ISSN 1682-5845



**AIDS HELPLINE: 0800-0123-22 Prevention is the cure**

**IMPORTANT NOTICE:**

**THE GOVERNMENT PRINTING WORKS WILL NOT BE HELD RESPONSIBLE FOR ANY ERRORS THAT MIGHT OCCUR DUE TO THE SUBMISSION OF INCOMPLETE / INCORRECT / ILLEGIBLE COPY.**

**No FUTURE QUERIES WILL BE HANDLED IN CONNECTION WITH THE ABOVE.**

**Contents**

<i>No.</i>		<i>Gazette No.</i>	<i>Page No.</i>
<b>GOVERNMENT NOTICES • GOEWERMENTSKENNISGEWINGS</b>			
<b>Transport, Department of/ Vervoer, Departement van</b>			
5029	South African National Roads Agency Limited and the National Roads Act (7/1998): Declaration Amendment of National Road N7 Section 7: Amendment of Declaration No. 141 of 2008 and 1441 of 2016.....	50925	3
5029	Suid-Afrikaanse Nasionale Padagentskap Beperk en Nasionale Paaie Wet (7/1998): Verklaring Wysiging van Nasionale Pad N7 Seksie 7: Wysiging van Verklaring No. 141 van 2008 en 1441 van 2016.....	50925	4

---

**GOVERNMENT NOTICES • GOEWERMENTSKENNISGEWINGS**

---

**DEPARTMENT OF TRANSPORT**

NO. 5029

12 July 2024

**THE SOUTH AFRICAN NATIONAL ROADS  
AGENCY SOC LIMITED**Registration No: 1998/009584/30

---

**DECLARATION AMENDMENT OF NATIONAL ROAD N7 SECTION 7**

AMENDMENT OF DECLARATION No. 141 OF 2008 AND 1441 OF 2016.

By virtue of Section 40 (1)(b) of The South African National Roads Agency Limited and the National Roads Act 1998 (Act No. 7 of 1998), I hereby amend Declaration No. 141 of 2008 and 1441 of 2016 by substituting it in its entirety, with the accompanying sheets 1 to 43 of Plan No. P1241/24.

**(National Road N7 Section 7: Garies – Springbok)**  
**MINISTER OF TRANSPORT**

## DEPARTEMENT VAN VERVOER

NO. 5029

12 Julie 2024


**DIE SUID-AFRIKAANSE NASIONALE  
PADAGENTSKAP MSB BEPERK**

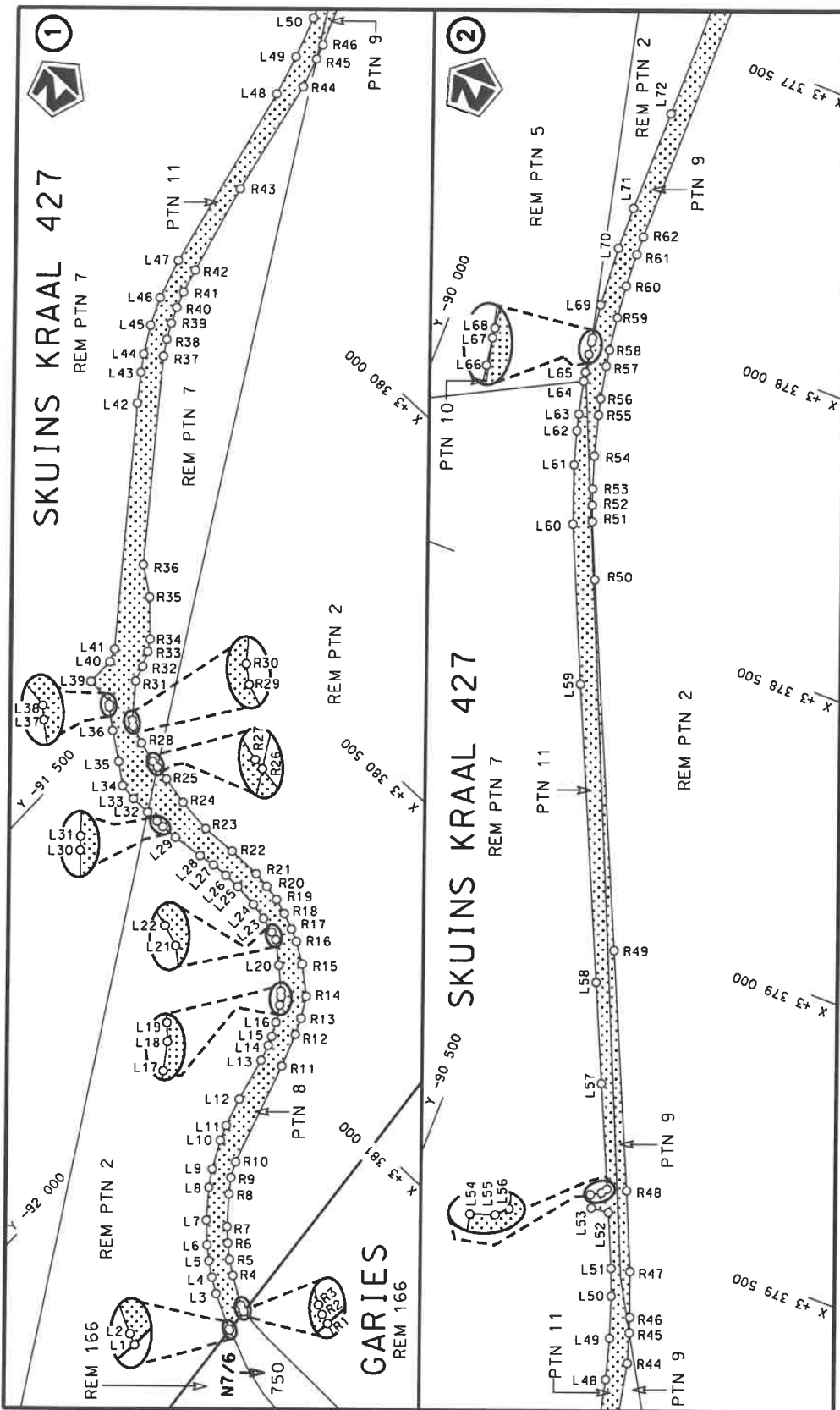
Registrasie No: 1998/009584/30

**VERKLARING WYSIGING VAN NASIONALE PAD N7 SEKSIE 7**

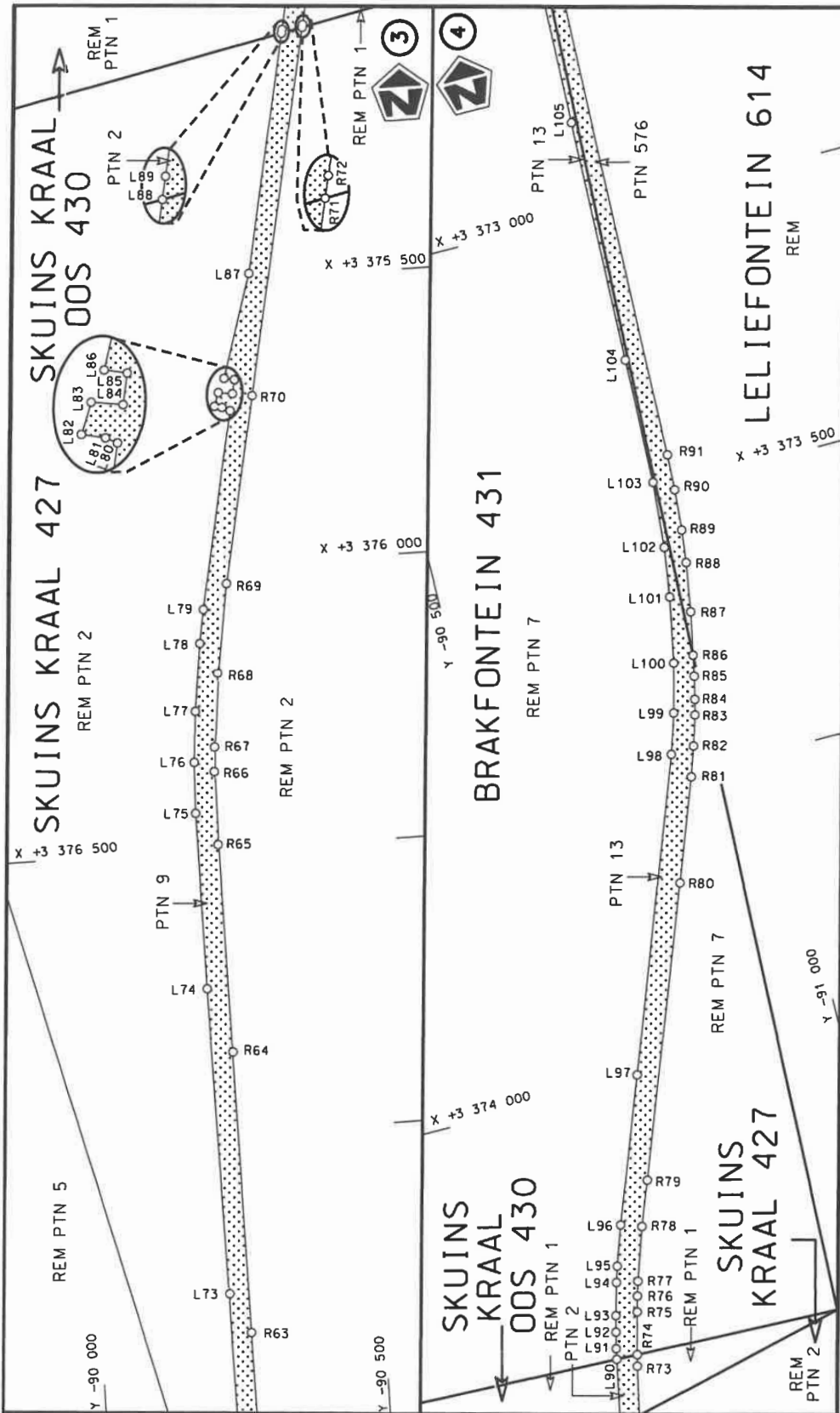
WYSIGING VAN VERKLARING No. 141 VAN 2008 EN 1441 VAN 2016.


Kragtens Artikel 40(1)(b) van die Suid-Afrikaanse Nasionale Padagentskap Beperk en Nasionale Paaie Wet 1998 (Wet no.7 van 1998), wysig ek hiermee Verklaring No. 141 van 2008 en 1441 van 2016 deur dit in sy geheel te vervang, met bygaande velle 1 tot 43 van Plan No. P1241/24.

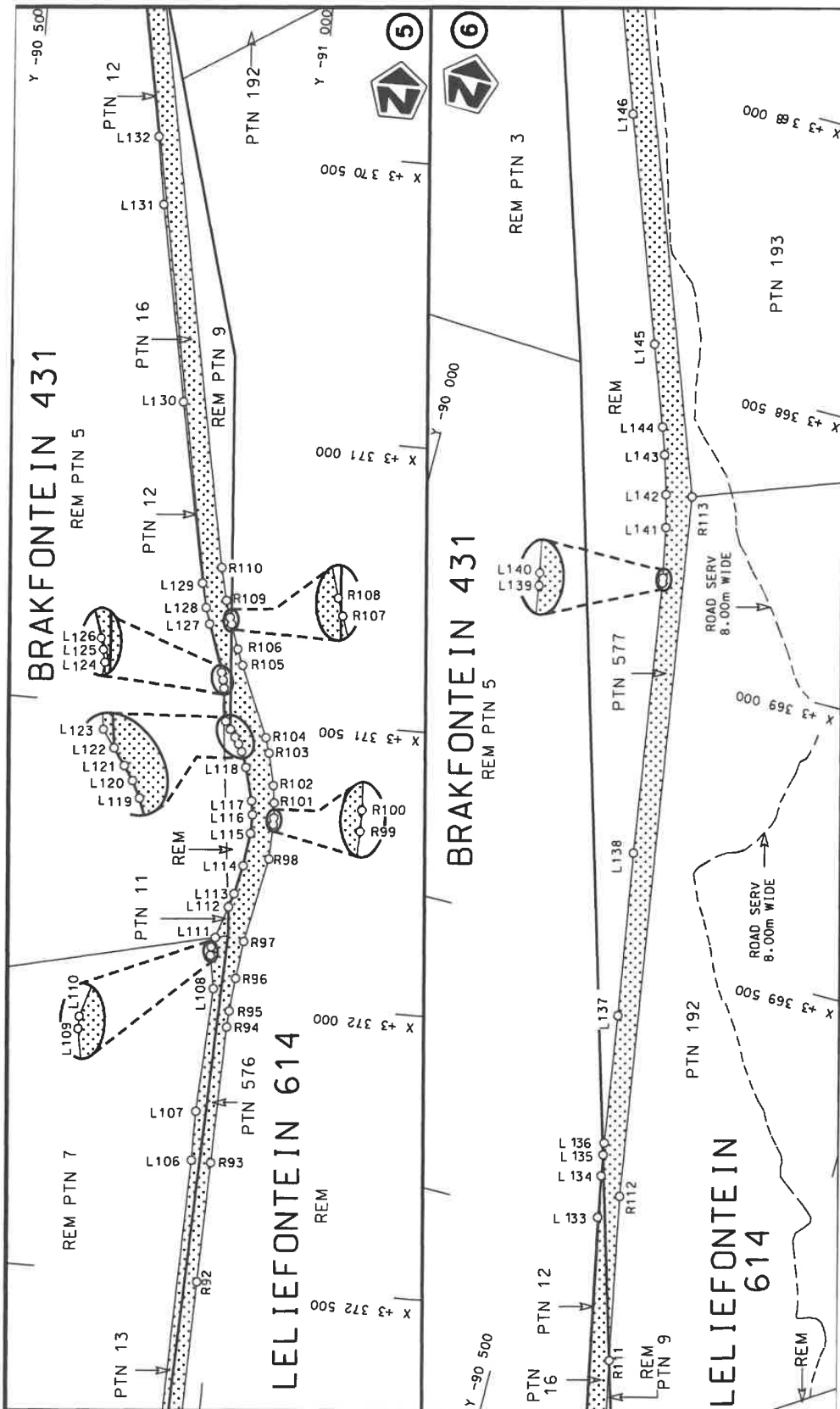
**(Nasionale Pad N7 Seksie 7: Garies – Springbok)****MINISTER VAN VERVOER**



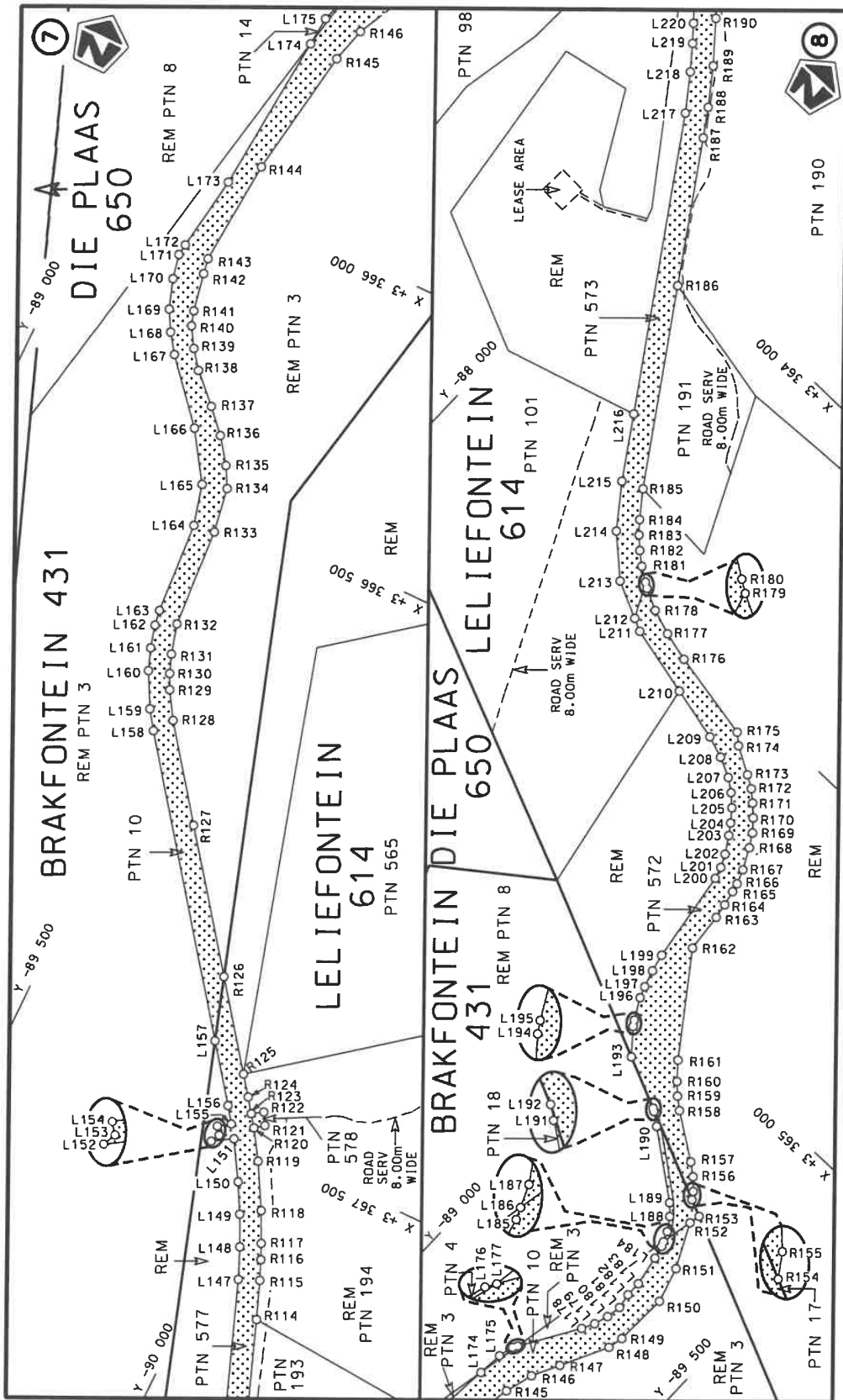
Die Suid Afrikaanse Nasionale Padagentskap MSB Bpk The South African National Roads Agency SOC Ltd	Die figuur getoon The figure shown	steidie padreserwe voor van 'n gedeelte represents the road reserve of a portion van Nasionale Roete N7 of National Route	Vel Sheet 1 of 43
			Plan P1241/24
			Seksie Section 7

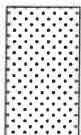


Die Suid Afrikaanse Nasionale Padogentskop MSB Bpk The South African National Roads Agency SOC Ltd	Die figuur getoon The figure shown		steldie padreserwe voor van 'n gedeelte represents the road reserve of a portion van Nasionale Roete N7 of National Route Section 7	Vel Sheet 2 of 43
				Plan P1241/24

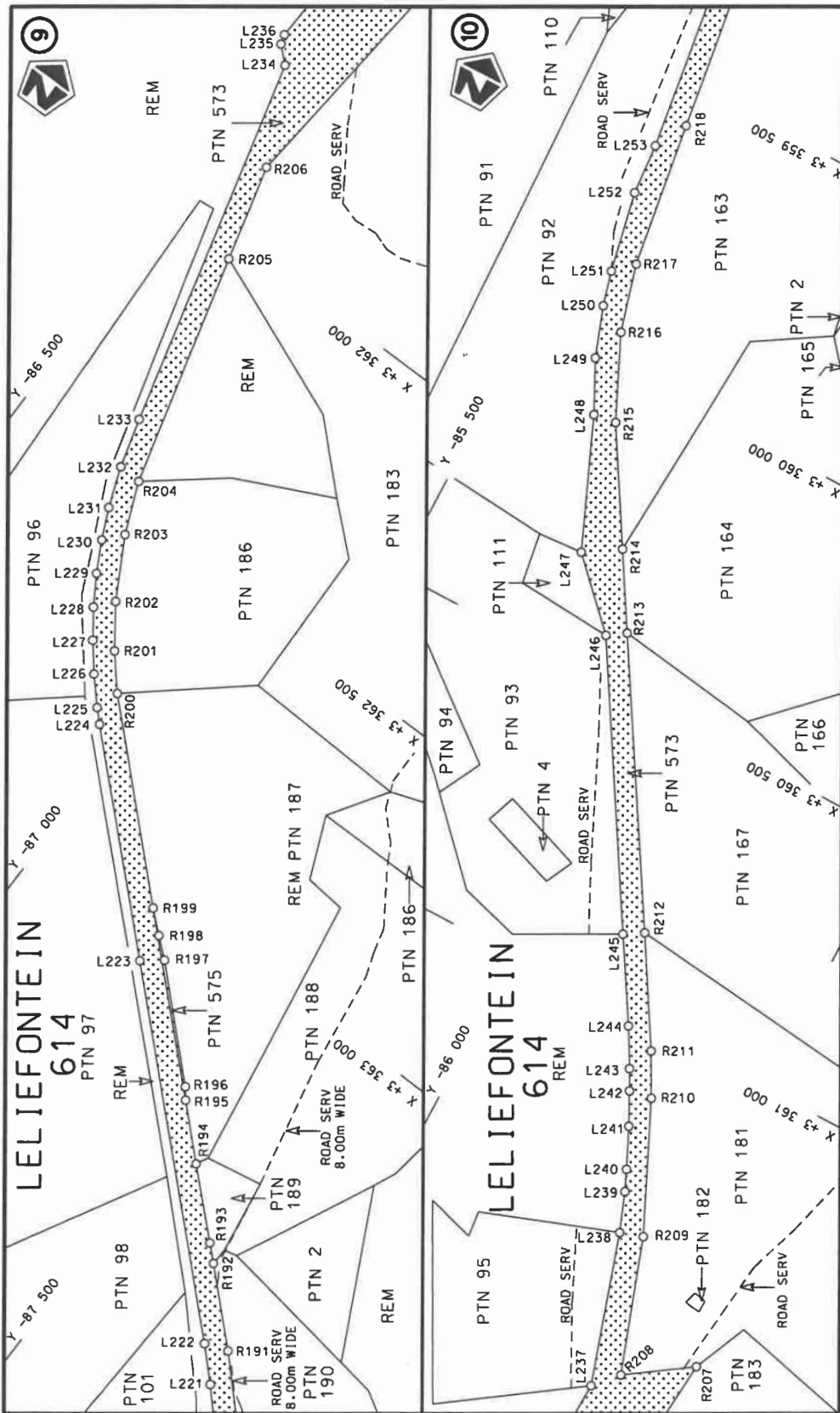


Die Suid Afrikaanse Nasionale Padagentskap MSB Bpk The South African National Roads Agency SOC Ltd	Die figuur getoon The figure shown	stelt die padreserwe voor van 'n gedeelte represents the road reserve of a portion van Nasionale Roete N7 of National Route	Vel Sheet 3 of 43
			Plan P1241/24
			Section 7

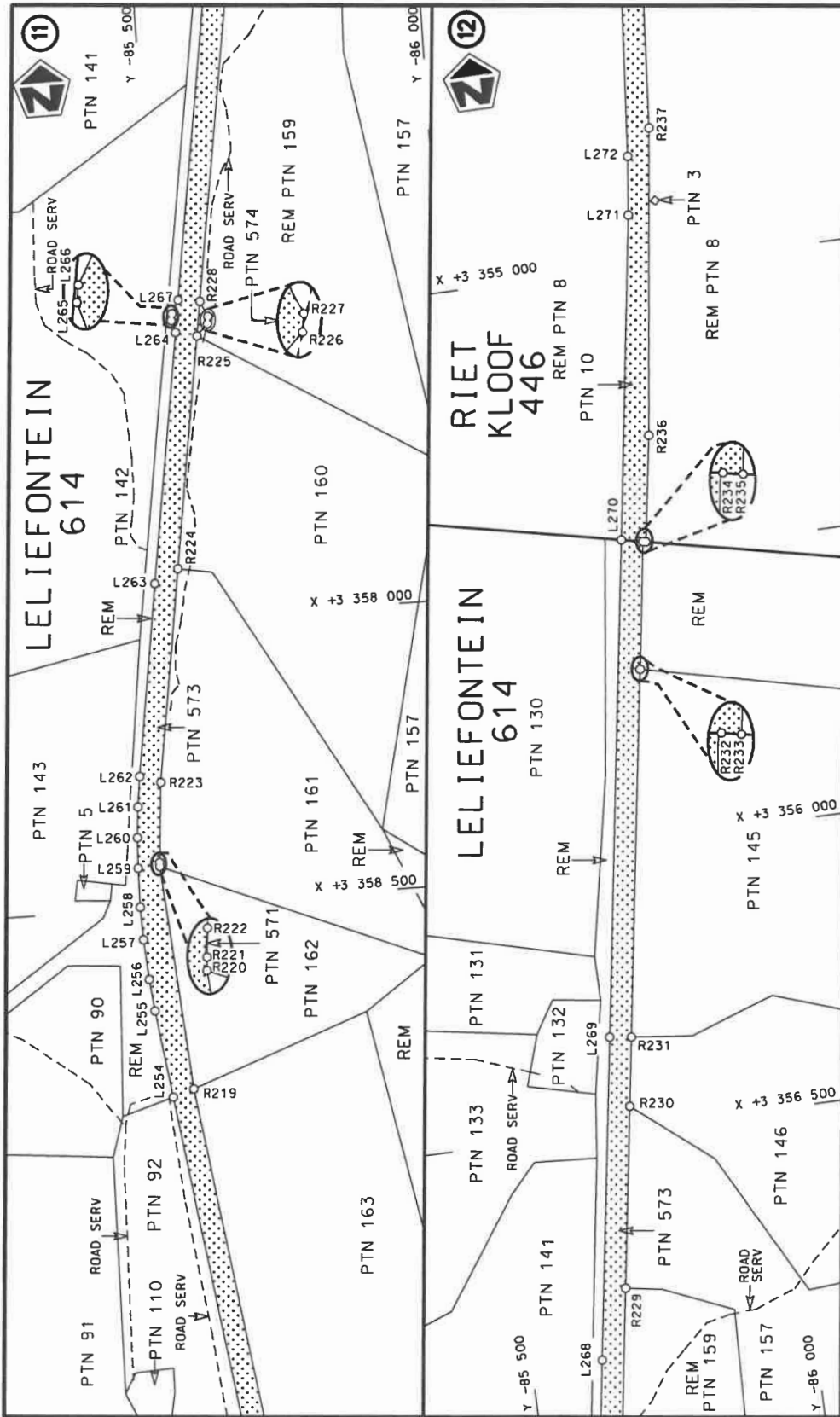


Die Suid Afrikaanse Nasionale Padagentskap MSB Bpk The South African National Roads Agency SOC Ltd	Die figuur getoon The figure shown		stelt die padreserwe voor van 'n gedeelte van Nasionale Roete N7 of National Route		
			7	Section	
			Vel Sheet	van of	4 4.3
			Plan		P1241/24

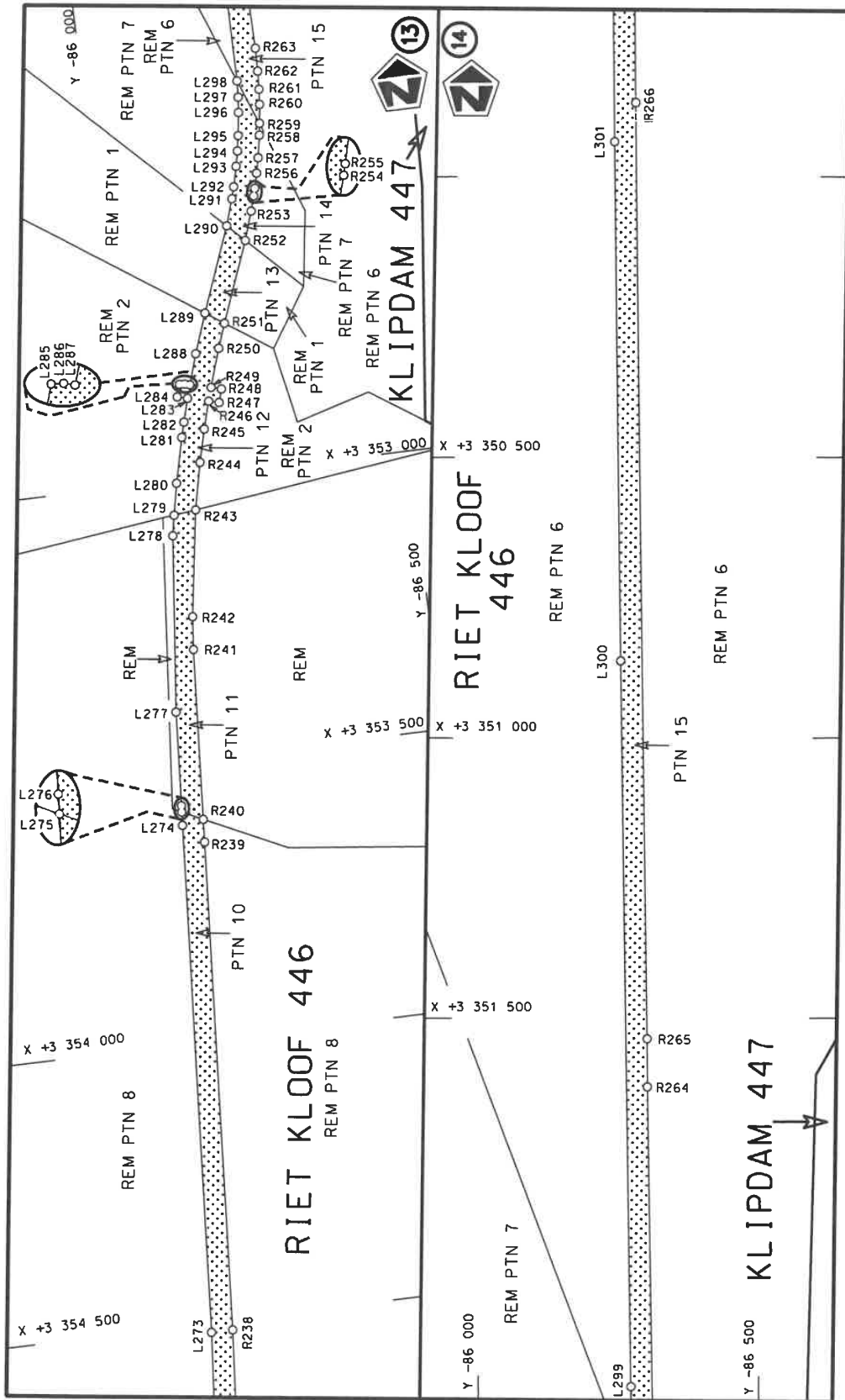




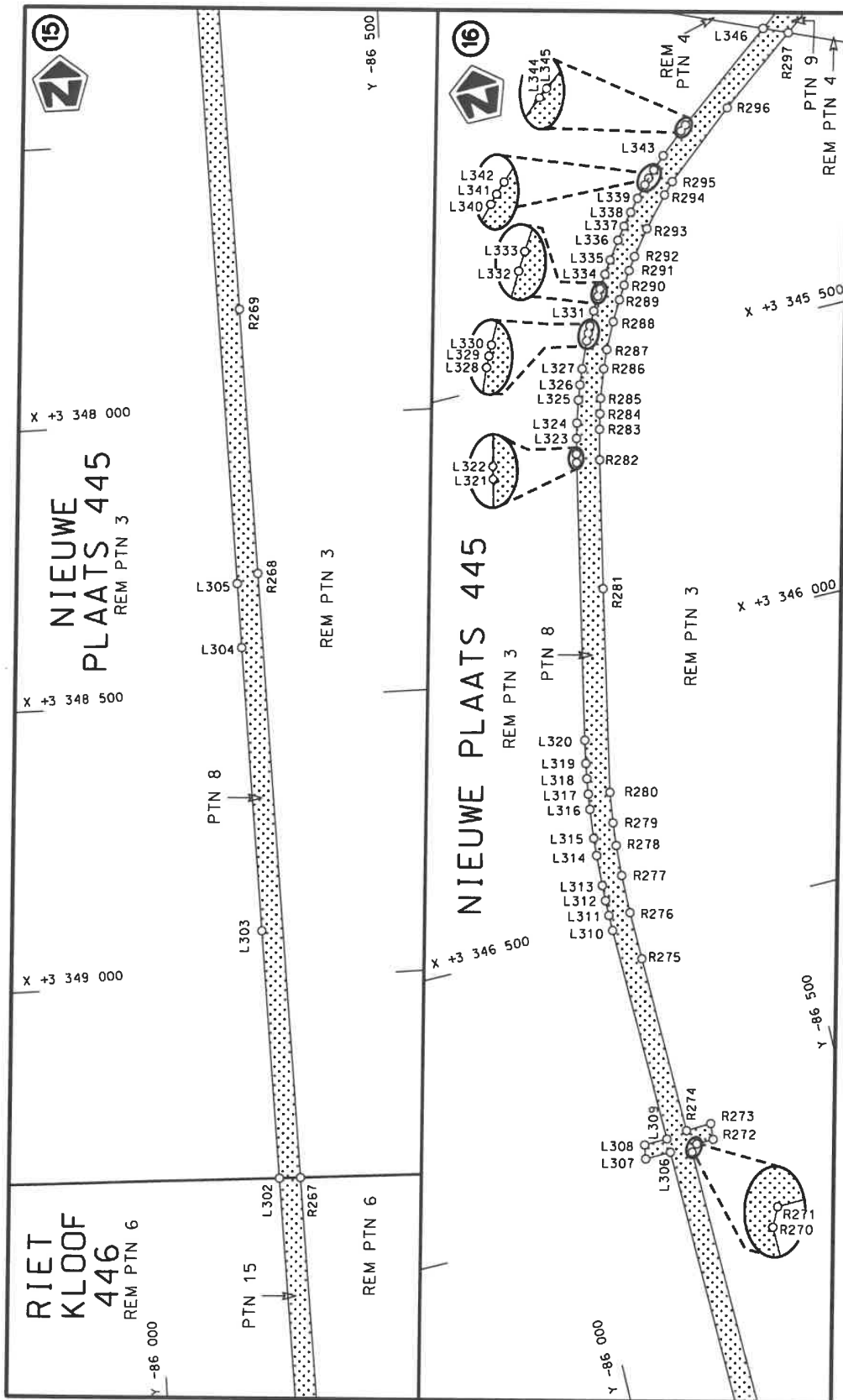
<p>Die Suid Afrikaanse Nasionale Padagentskap MSB Bpk The South African National Roads Agency SOC Ltd</p>	<p>Die figuur getoon The figure shown</p>	<p>steldie padreserwe voor van 'n gedeelte represents the road reserve of a portion van Nasionale Roete N7 of National Route 7</p>	<p>Vel Sheet 5 of 43</p> <p>Plan P1241/24</p>
---	---	--	---

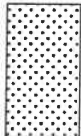


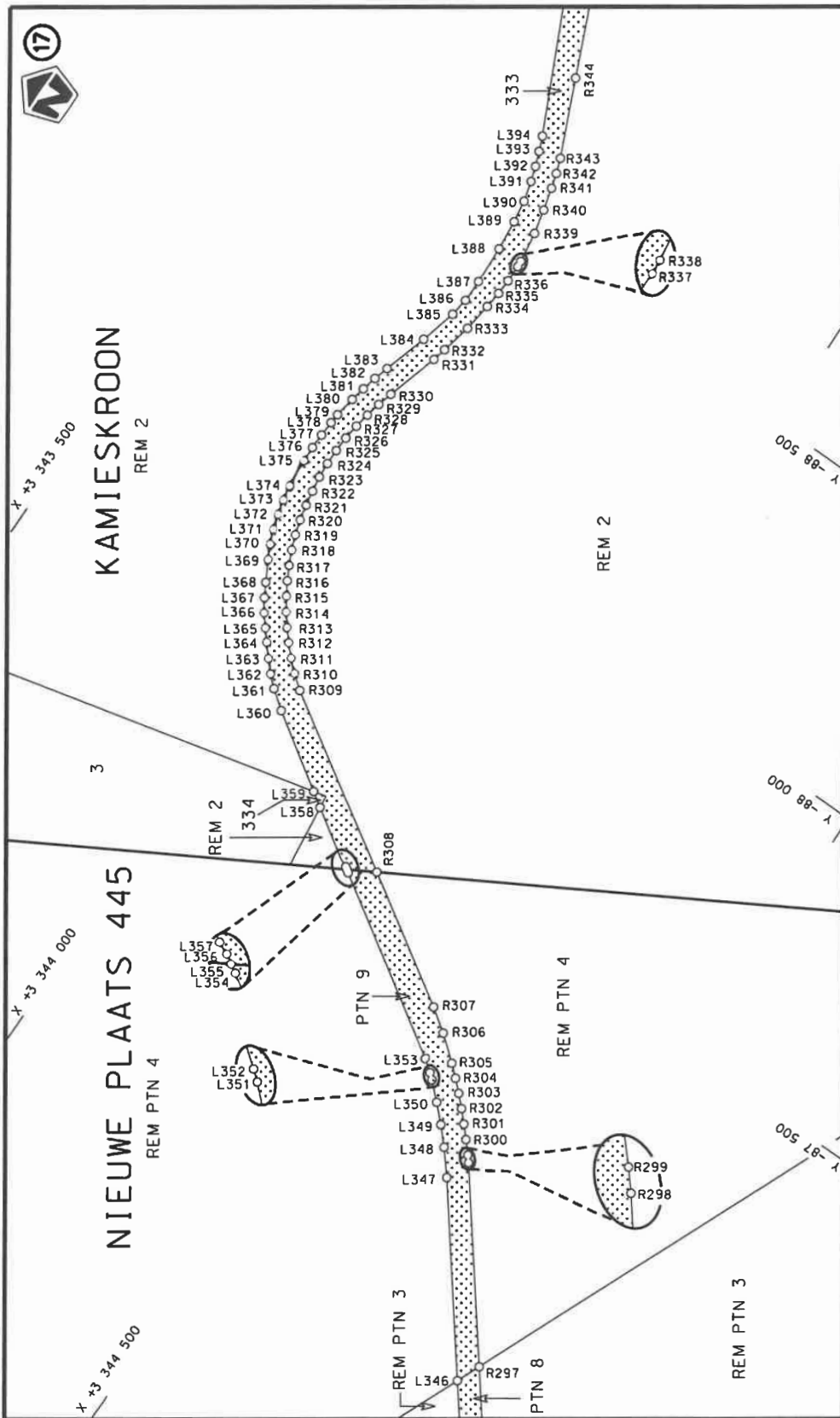
<p>Die Suid Afrikaanse Nasionale Padagentskap MSB Bpk The South African National Roads Agency SOC Ltd</p>	<p>Die figuur getoon The figure shown</p>	<p>steldie padreserwe voor van 'n gedeelte represents the road reserve of a portion van Nasionale Roete N7 of National Route</p>	<p>Vel Sheet 6 of 43</p>
		<p>Seksie N7 Section</p>	<p>Plan P1241/24</p>



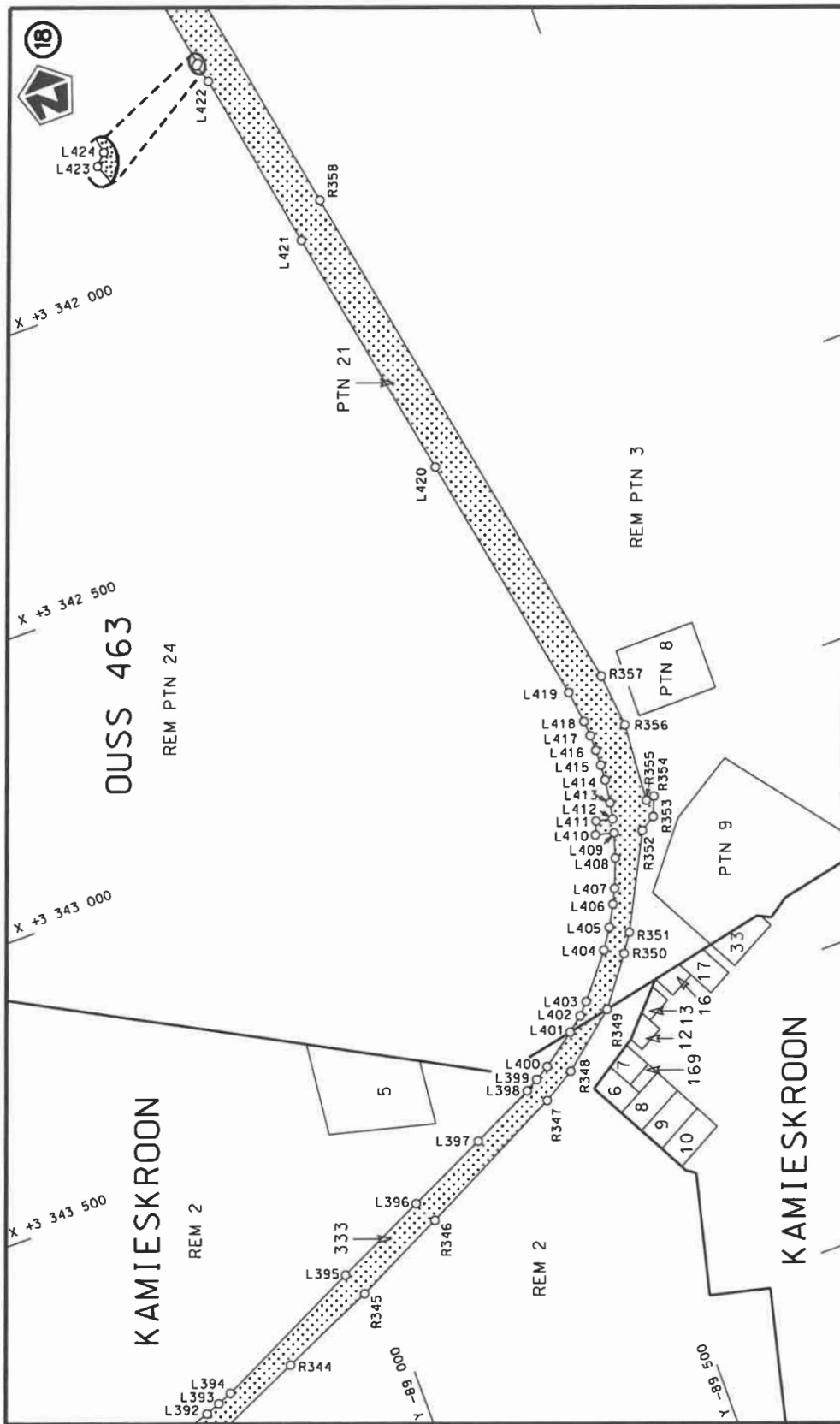
Die Suid-Afrikaanse Nasionale Padagentskap MSB Bpk The South African National Roads Agency SOC Ltd	Die figuur getoon The figure shown		stel die podreserwe voor van 'n gedeelte represents the road reserve of a portion van Nasionale Roete N7 of National Route Section	
	7		7	4.3
			Plan	P1241/24

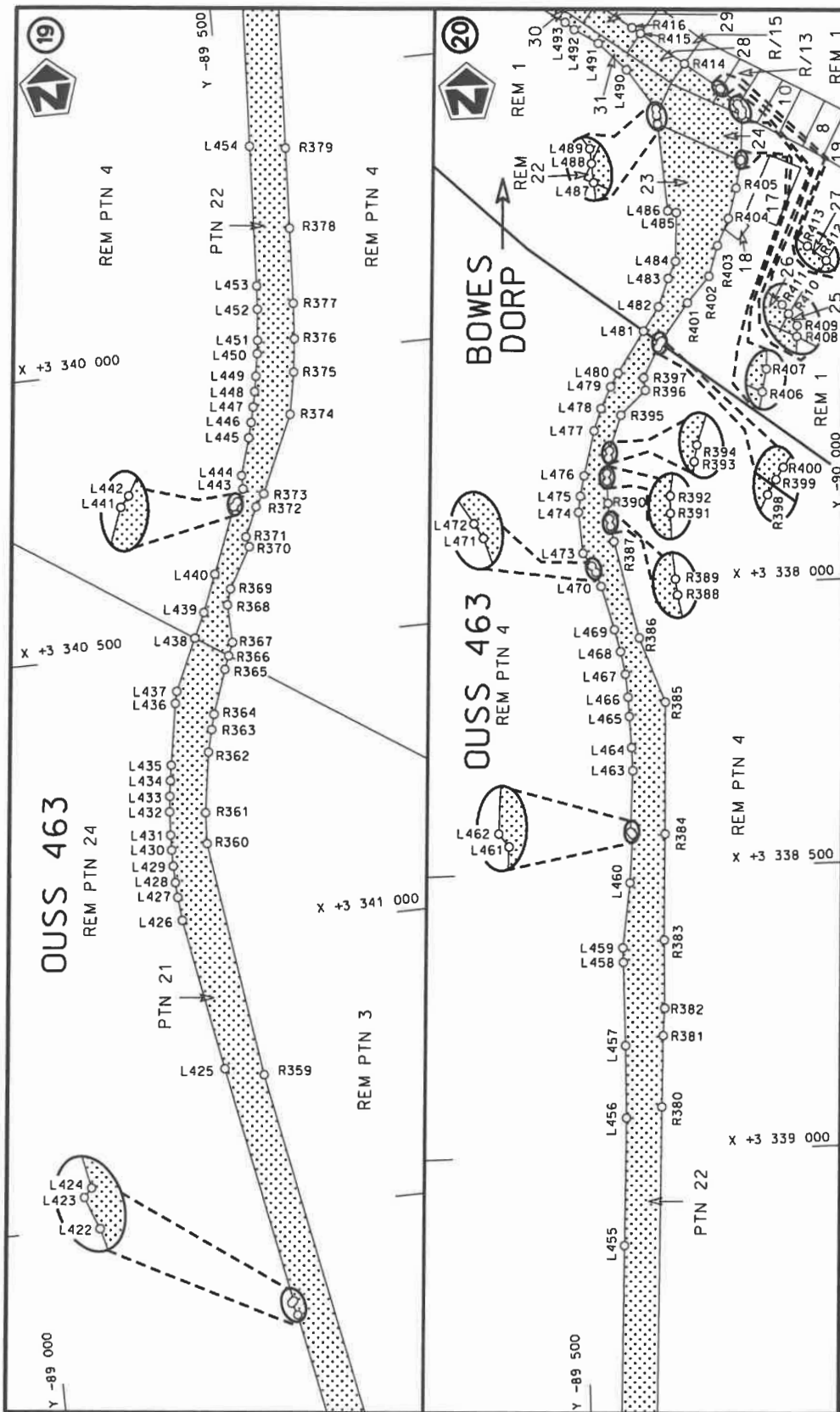



Die Suid Afrikaanse Nasionale Padagentskap MSB Bpk The South African National Roads Agency SOC Ltd	Die figuur getoon The figure shown		stel die padreserwe voor van 'n gedeelte represents the road reserve of a portion van Nasionale Roete N7 of National Route N7	
			Seksie Section	7
		Vel Sheet	van of	43
		Plan	P1241/24	

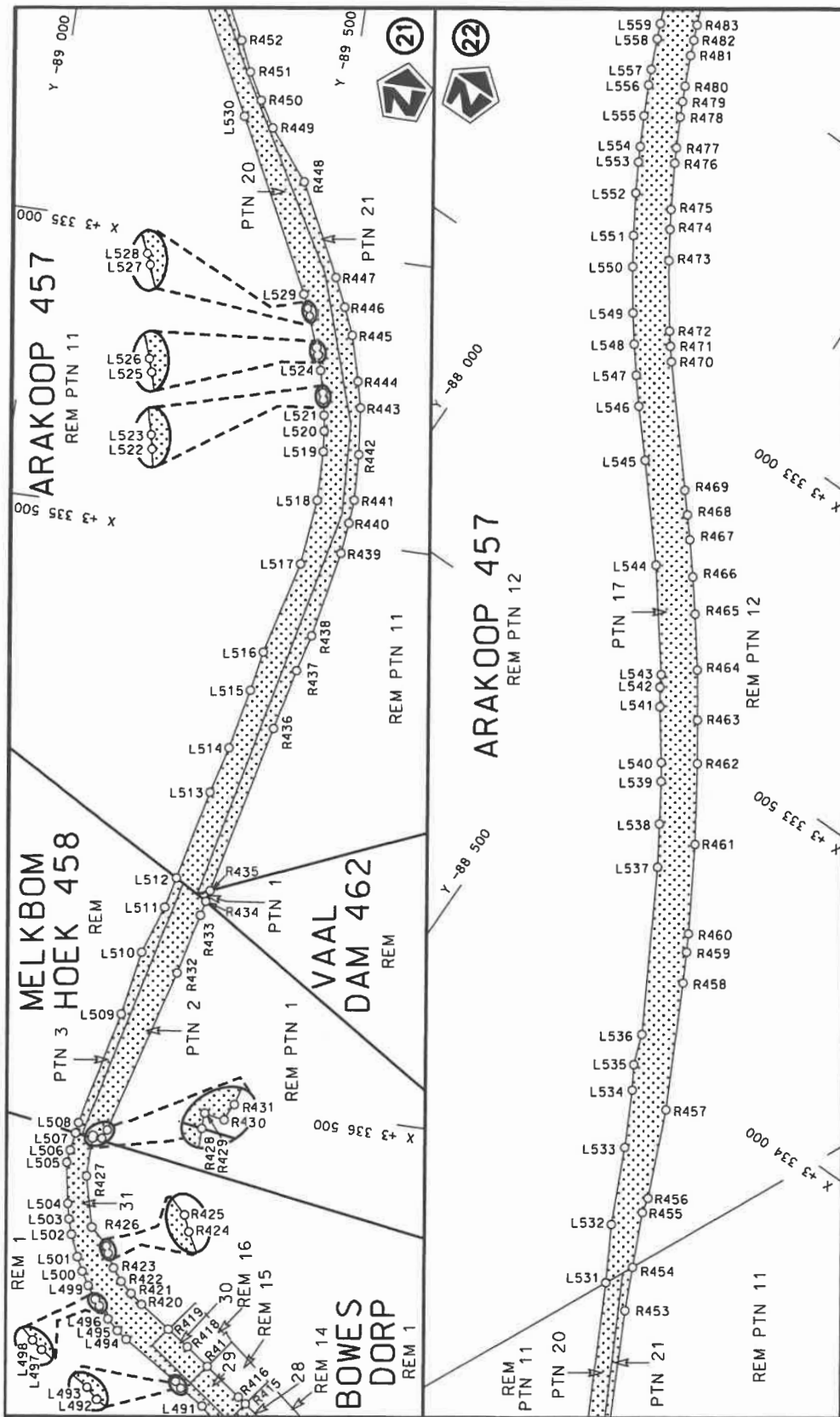


Vel Sheet 9 of 43	Plan P1241/24
steldie podreserwe voor van 'n gedeelte represents the road reserve of a portion van Nasionale Roete N7 of National Route N7 Seksie Section 7	
Die figuur getoon	The figure shown
Die Suid Afrikaanse Nasionale Padagentskap MSB Bpk	The South African National Roads Agency SOC Ltd



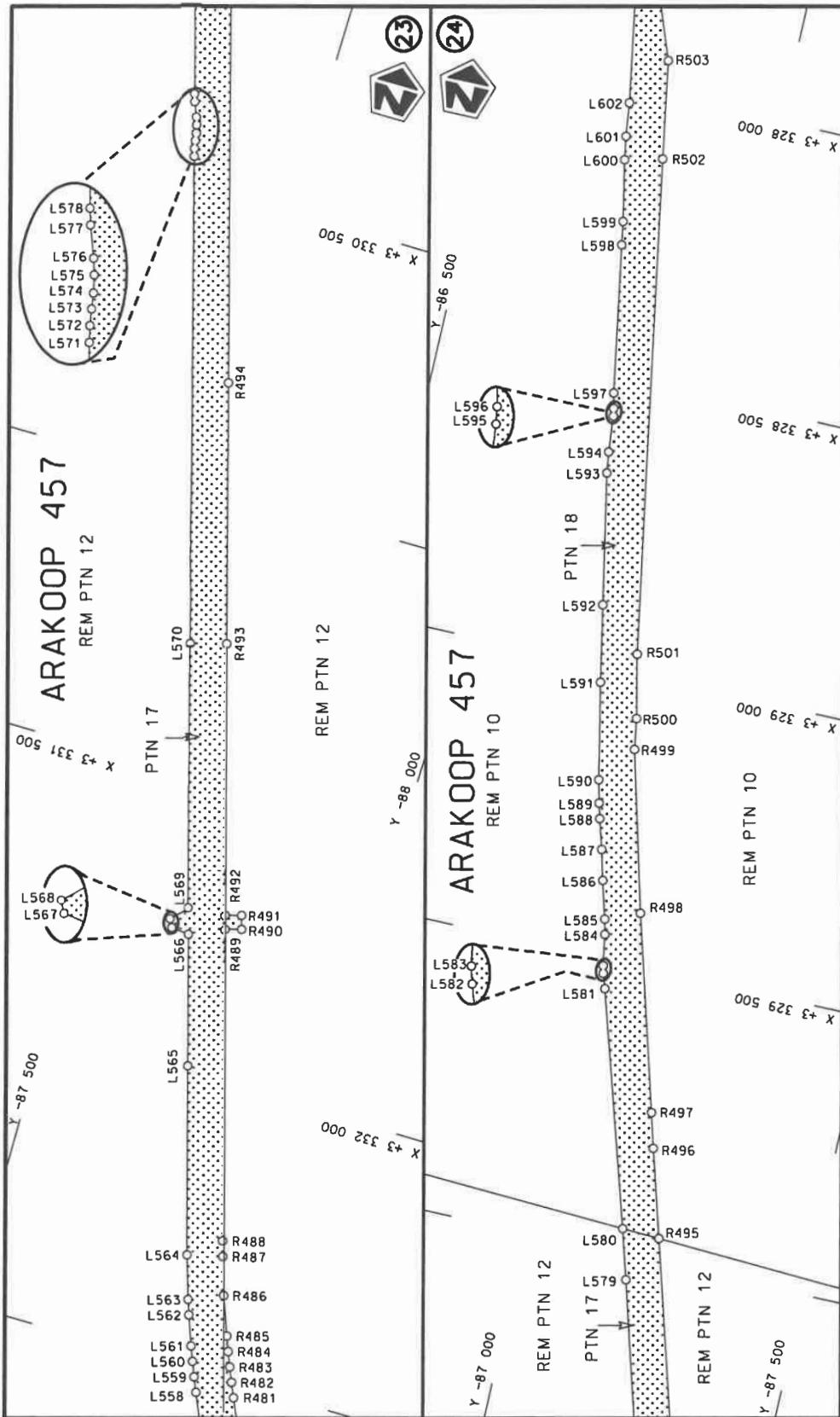



Die Suid-Afrikaanse Nasionale Padagentskap MSB Bpk The South African National Roads Agency SOC Ltd	Die figuur getoon The figure shown		steldie padreserwe voor van 'n gedeelte represents the road reserve of a portion van Nasionale Roete N7 of National Route N7 Section	Vel Sheet 11 of 43
				Plan P1241/24

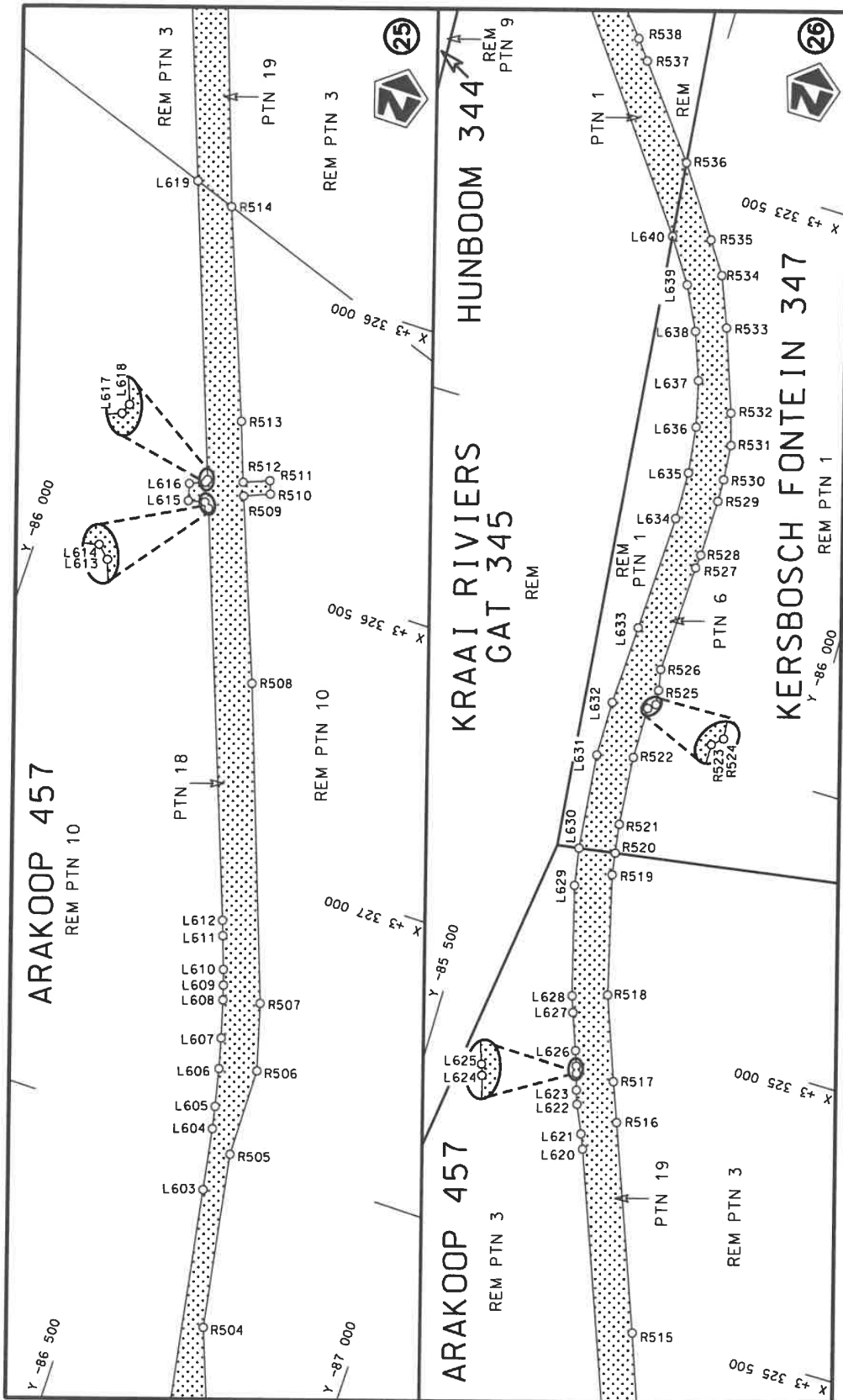


Die Suid-Afrikaanse Nasionale Padagentskap MSB Bpk The South African National Roads Agency SOC Ltd	Die figuur getoon The figure shown	stelde padreserwe voor van 'n gedeelte represents the road reserve of a portion van Nasionale Roete N7 of National Route	Vel Sheet 12 of 43
	Die figuur getoon The figure shown	stelde padreserwe voor van 'n gedeelte represents the road reserve of a portion van Nasionale Roete N7 of National Route	Plan P1241/24

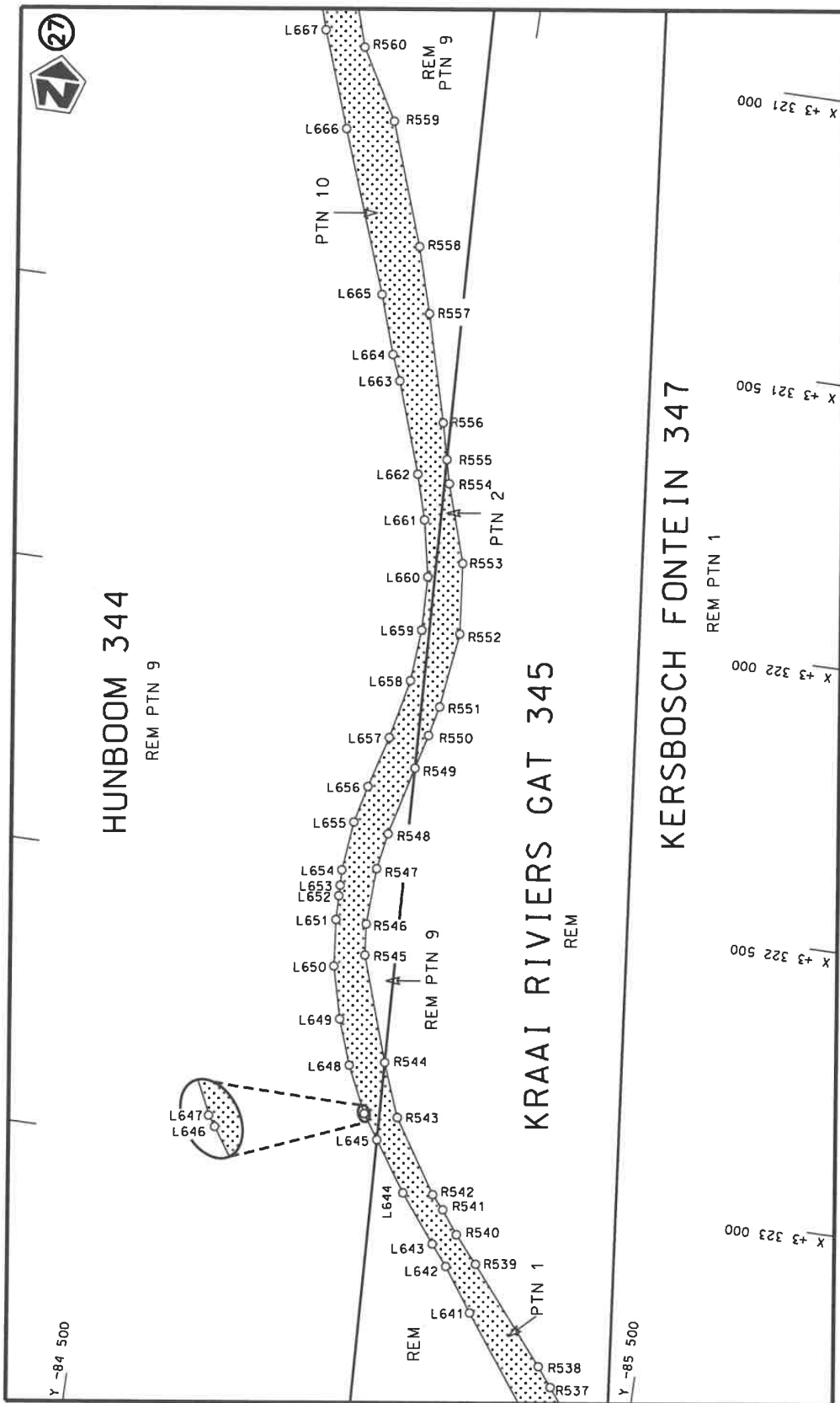


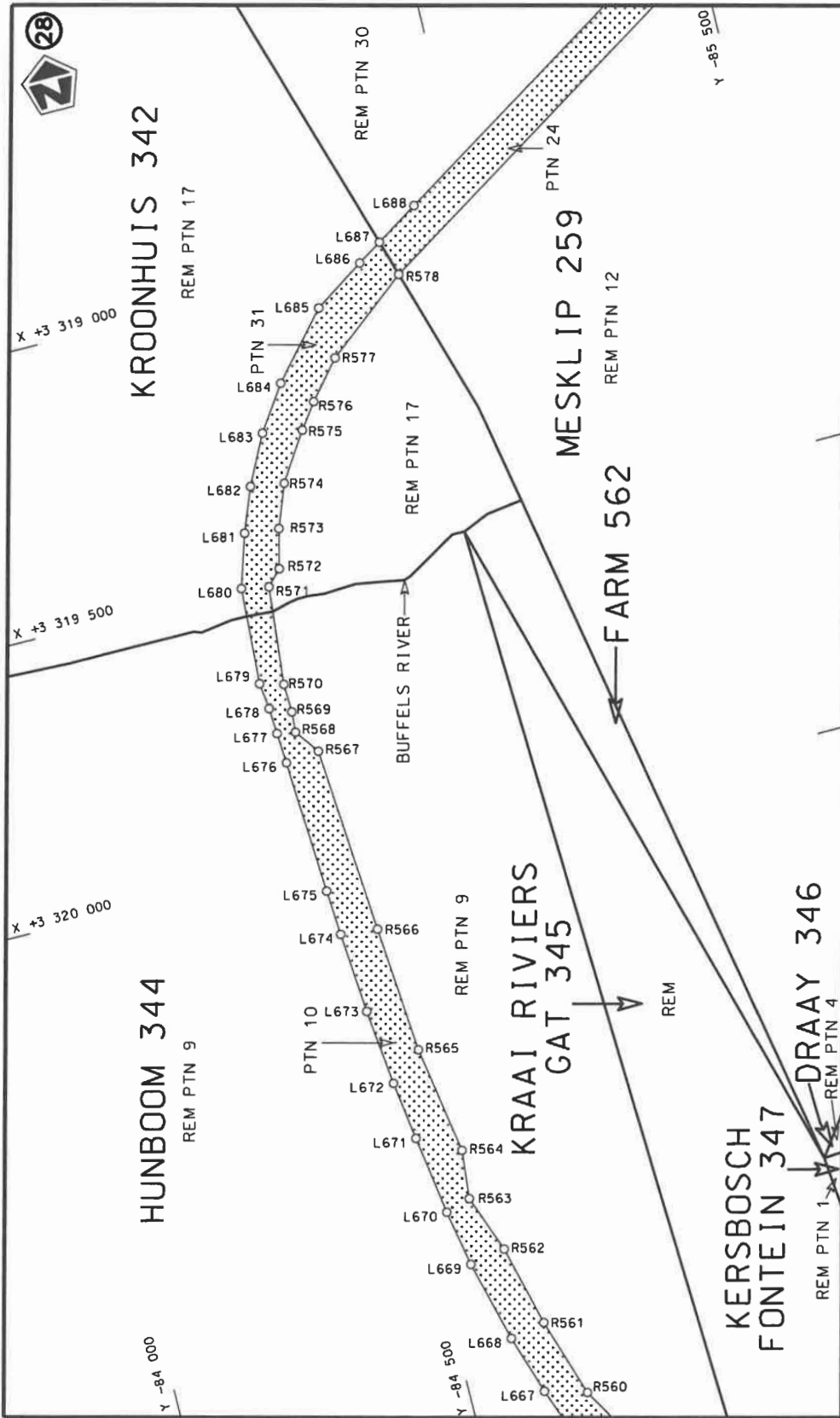



Vel Sheet 13 of 43	steldie padreserwe voor van 'n gedeelte represents the road reserve of a portion van Nasionale Roete N7 of National Route Section	Die figuur getoon The figure shown	Die Suid Afrikaanse Nasionale Padagentskap MSB Bpk The South African National Roads Agency SOC Ltd
Plan P1241/24	7		Section

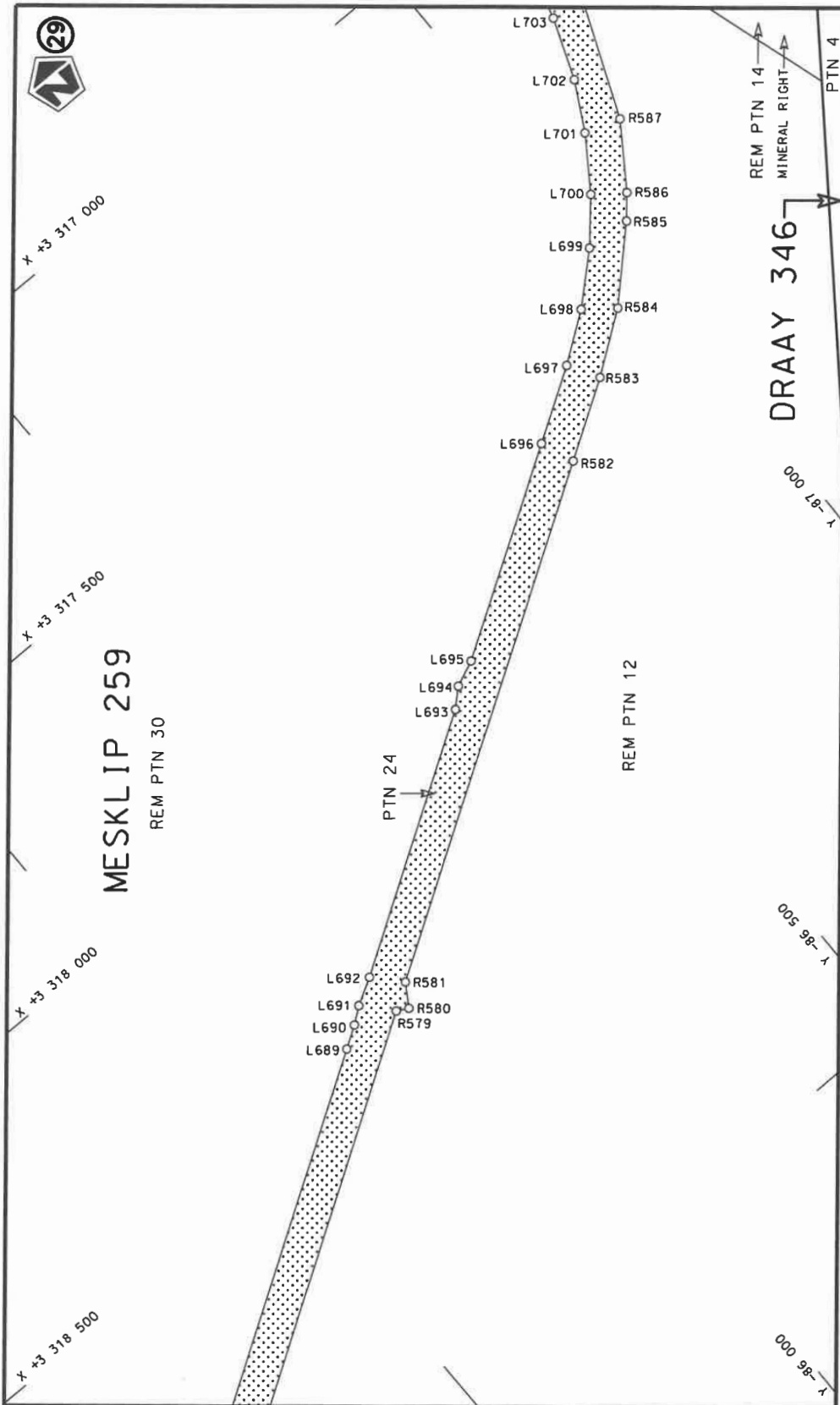


<p>Die Suid Afrikaanse Nasionale Padagentskap MSB Bpk The South African National Roads Agency SOC Ltd</p>	<p>Die figuur getoon The figure shown</p>	<p>stelt die padreserwe voor van 'n gedeelte represents the road reserve of a portion van Nasionale Roete N7 of National Route N7</p> <p>Seksie N7 Section 7</p>	<p>Vel Sheet 14 of 43 Plan P1241/24</p>
---	---	--	---

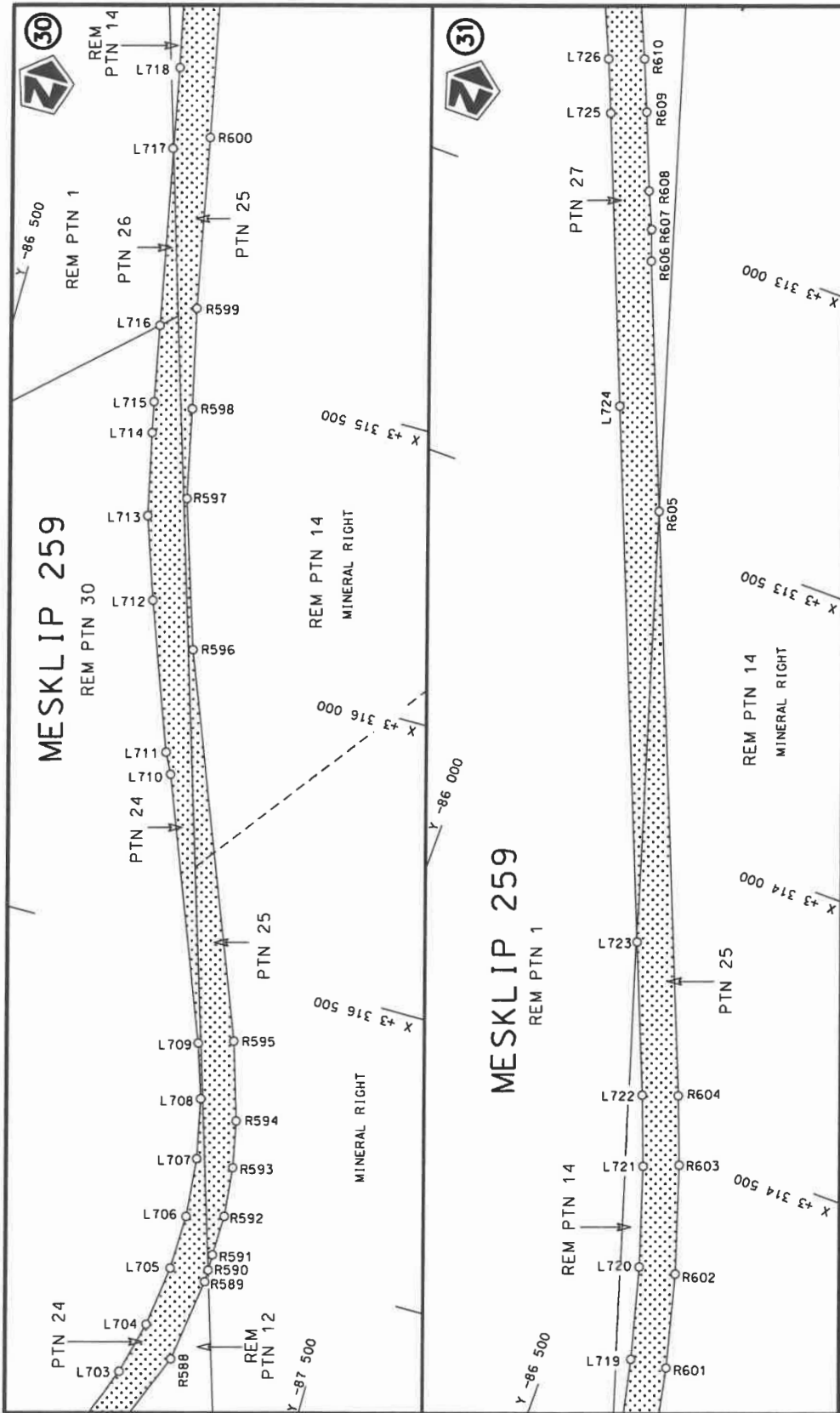




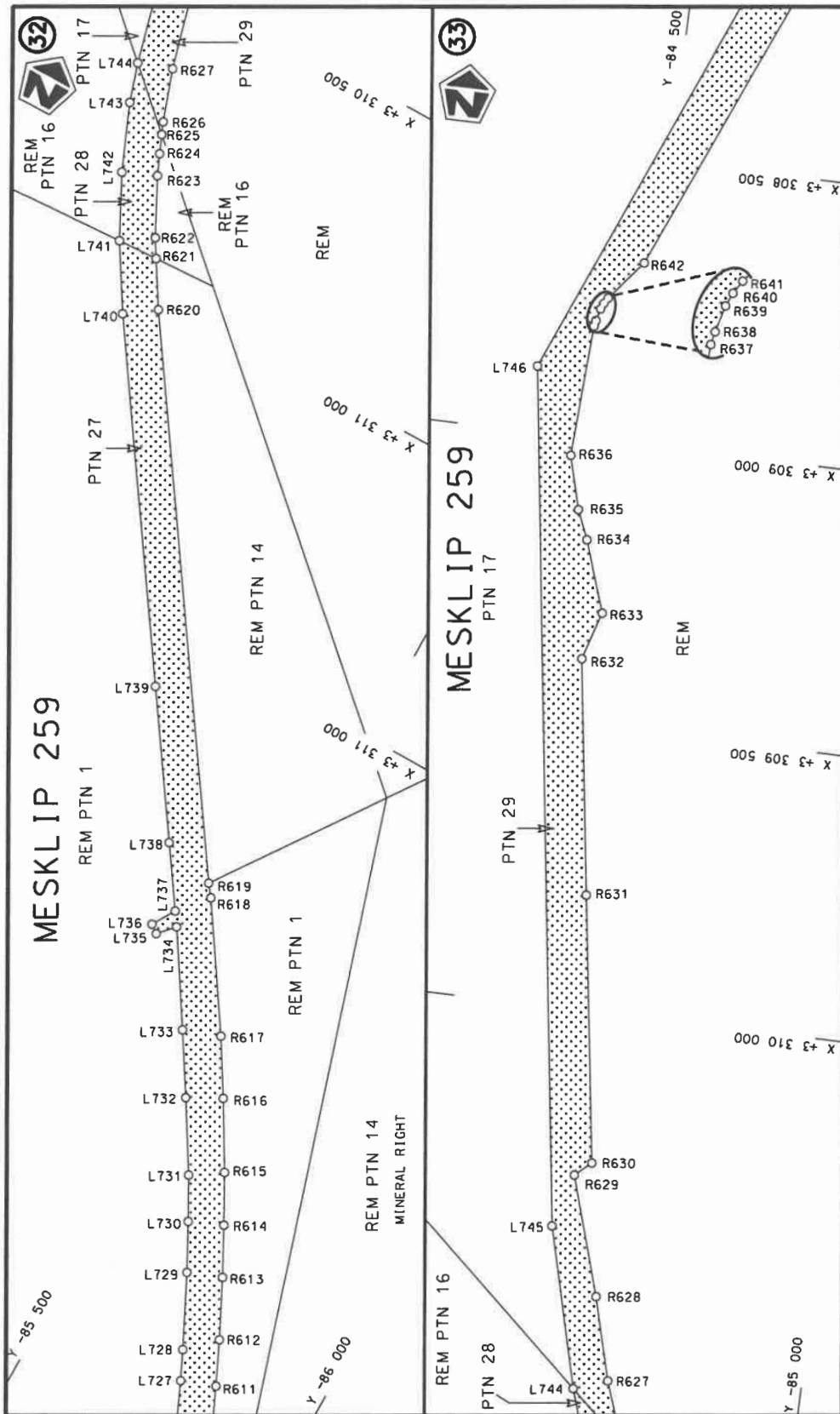
Die Suid Afrikaanse Nasionale Padagentskap MSB Bpk The South African National Roads Agency SOC Ltd	Die figuur getoon The figure shown		steldie padreserwe voor van 'n gedeelte represents the road reserve of a portion van Nasionale Roete N7 of National Route Section 7	
			Vel Sheet 16 of 43	Plan P1241/24



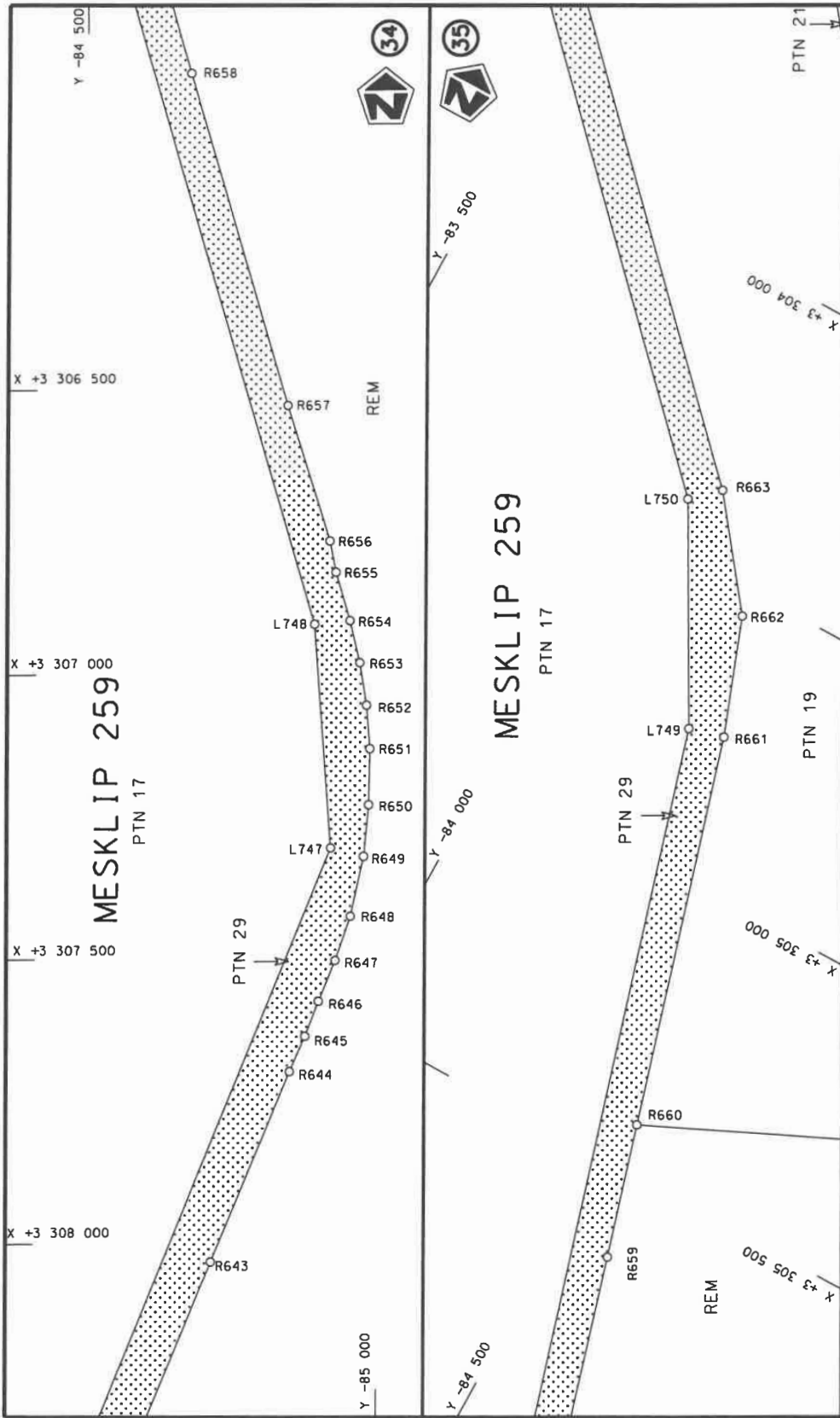
Die Suid Afrikaanse Nasionale Padagentskap MSB Bpk The South African National Roads Agency SOC Ltd	Die figuur getoon The figure shown	steldie padreserwe voor van 'n gedeelte represents the road reserve of a portion van Nasionale Roete N7 of National Route	7
		N7 Seksie Section	Plan P1241/24
		Vel Sheet 17 of 43	



<p>Die Suid Afrikaanse Nasionale Padagentskap MSB Bpk The South African National Roads Agency SOC Ltd</p>	<p>Die figuur getoon The figure shown</p>	<p>steldie padreserwe voor van 'n gedeelte represents the road reserve of a portion van Nasionale Roete N7 of National Route</p>	<p>Section 7</p>	<p>Vel Sheet 18 of 43</p>	<p>Plan P1241/24</p>
---	---	--	------------------	---------------------------	----------------------

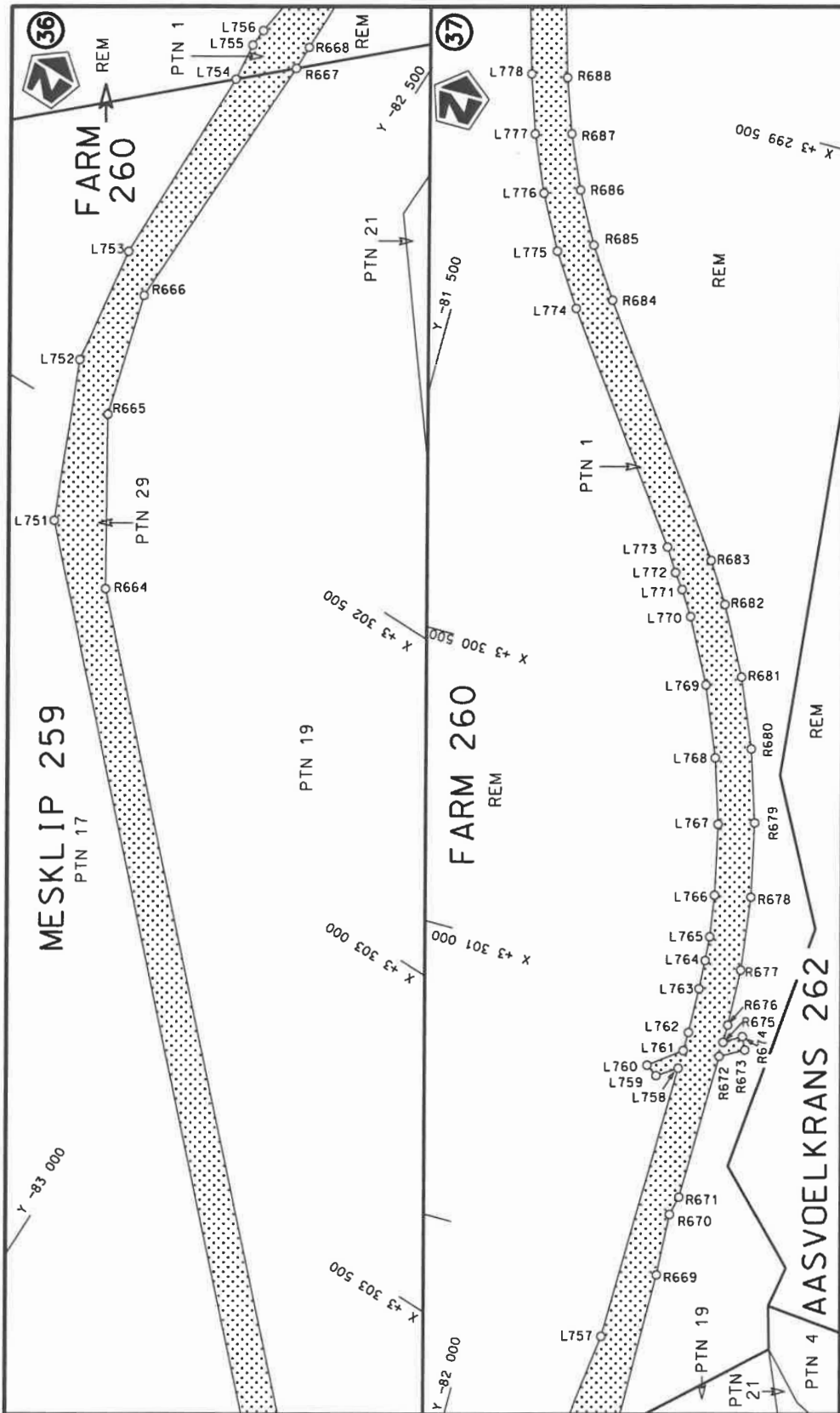



Die Suid Afrikaanse Nasionale Padagentskap MSB Bpk The South African National Roads Agency SOC Ltd	Die figuur getoon The figure shown	steldie padreserwe voor van 'n gedeelte represents the road reserve of a portion van Nasionale Roete N7 of National Route	7	Plan P1241/24
			Sheet 19 of 43	

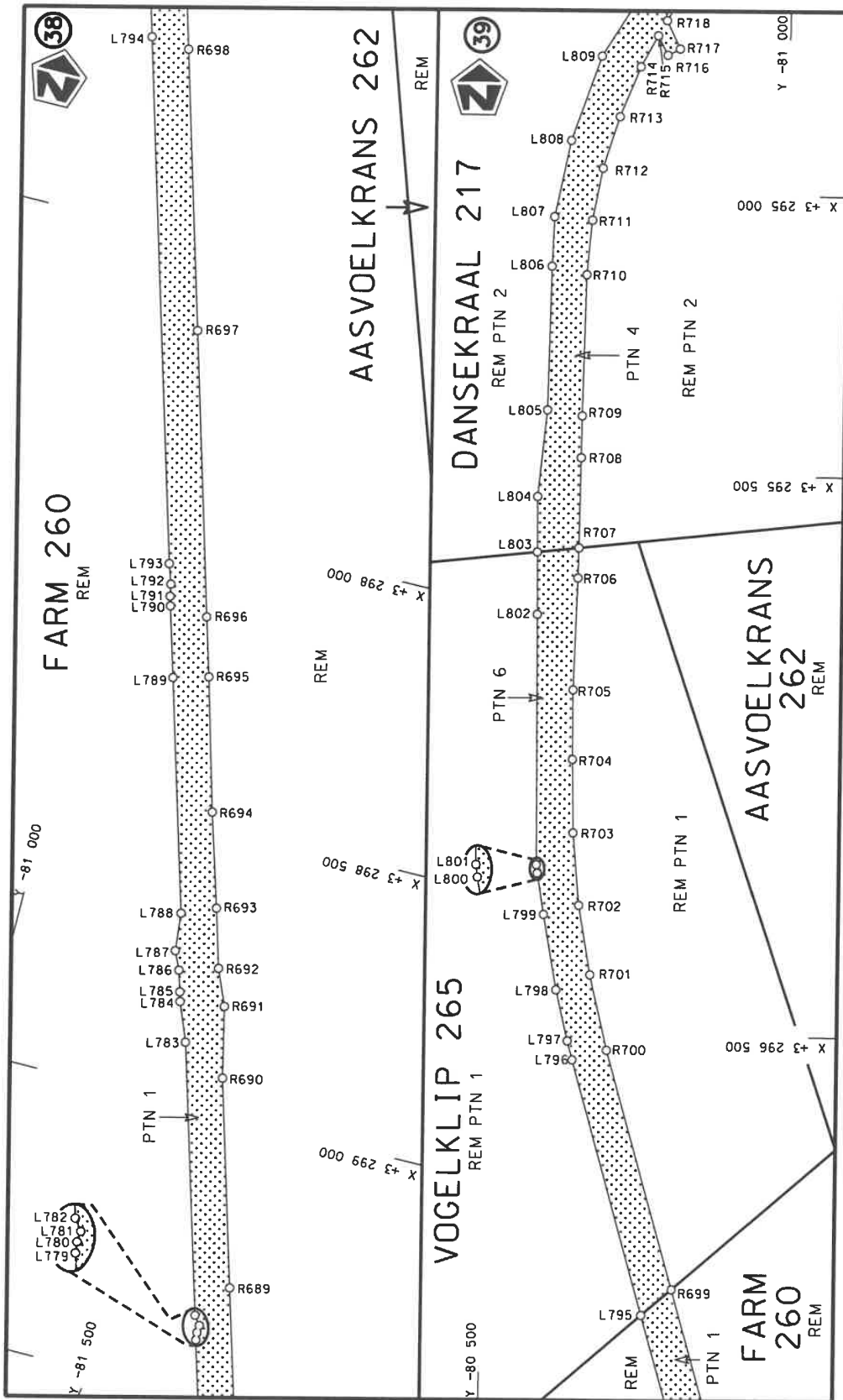


<p>Die Suid Afrikaanse Nasionale Padagentskap MSB Bpk The South African National Roads Agency SOC Ltd</p>	<p>Die figuur getoon The figure shown</p> 	<p>stelt die padreserwe voor van 'n gedeelte represents the road reserve of a portion van Nasionale Roete N7 of National Route</p>	<p>Vel Sheet 20 of 43 Plan P1241/24 Seksie 7 Section</p>
---	---	--	--





Die Suid Afrikaanse Nasionale Padagentskap MSB Bpk The South African National Roads Agency SOC Ltd	Die figuur getoon The figure shown		steldie padreserwe voor van 'n gedeelte represents the road reserve of a portion van Nasionale Roete N7 of National Route Section	Vel Sheet 21 of 43
				Plan P1241/24



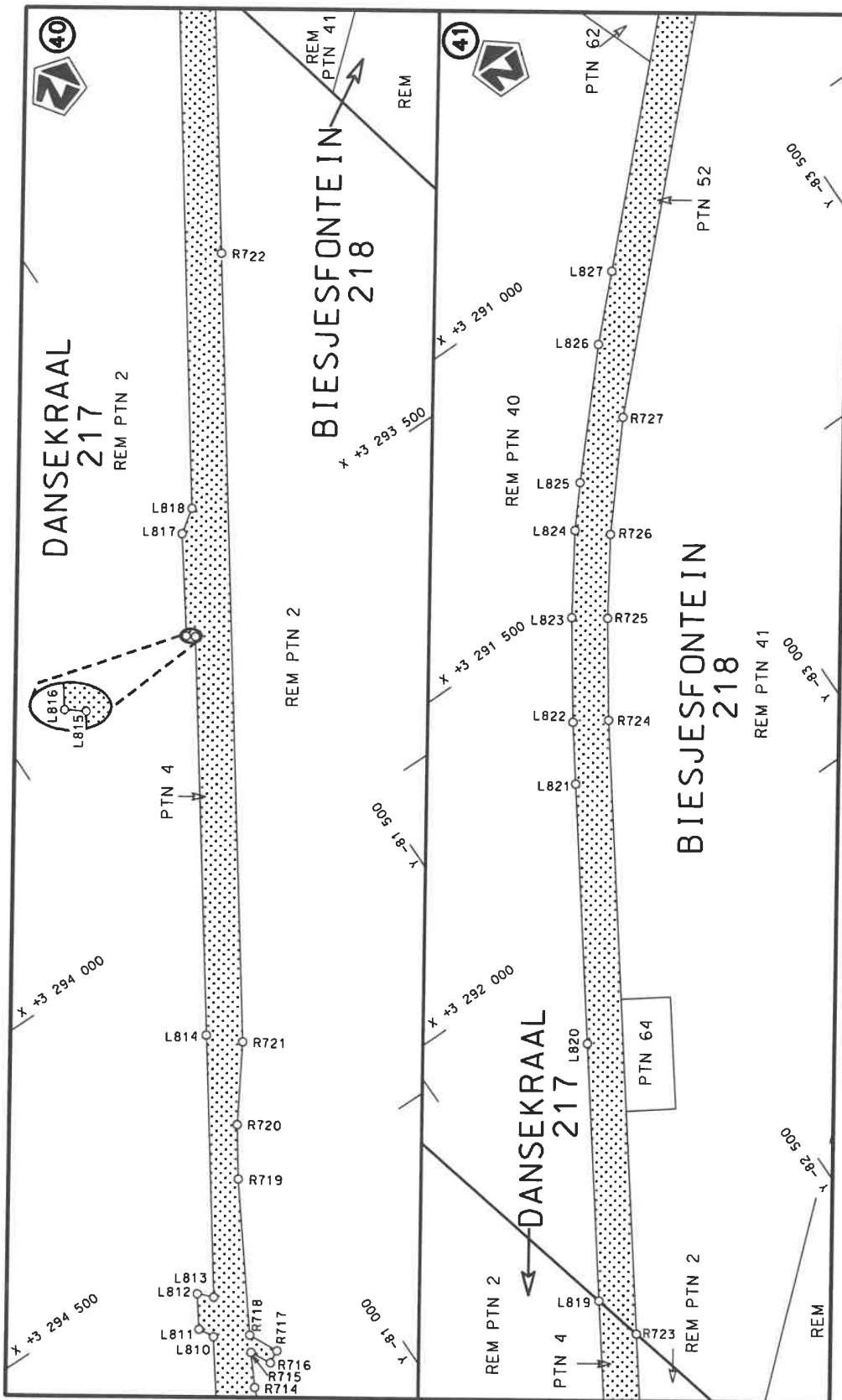
Vel  
Sheet 22 of 43  
Plan P1241/24


stel die padreserwe voor van 'n gedeelte  
represents the road reserve of a portion  
van Nasionale Roete N7  
of National Route N7  
Seksie 7  
Section

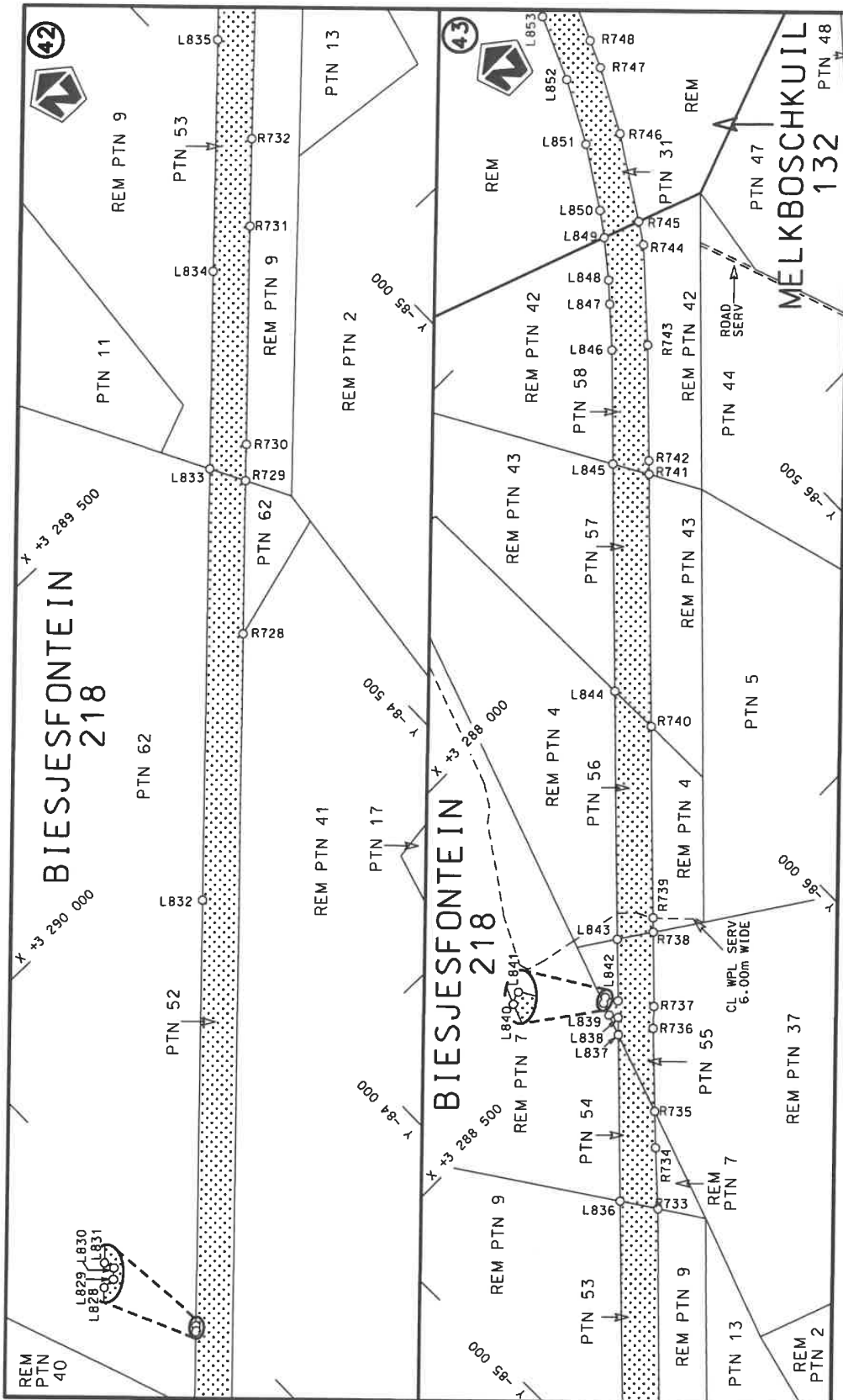


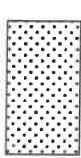
Die figuur getoon  
The figure shown

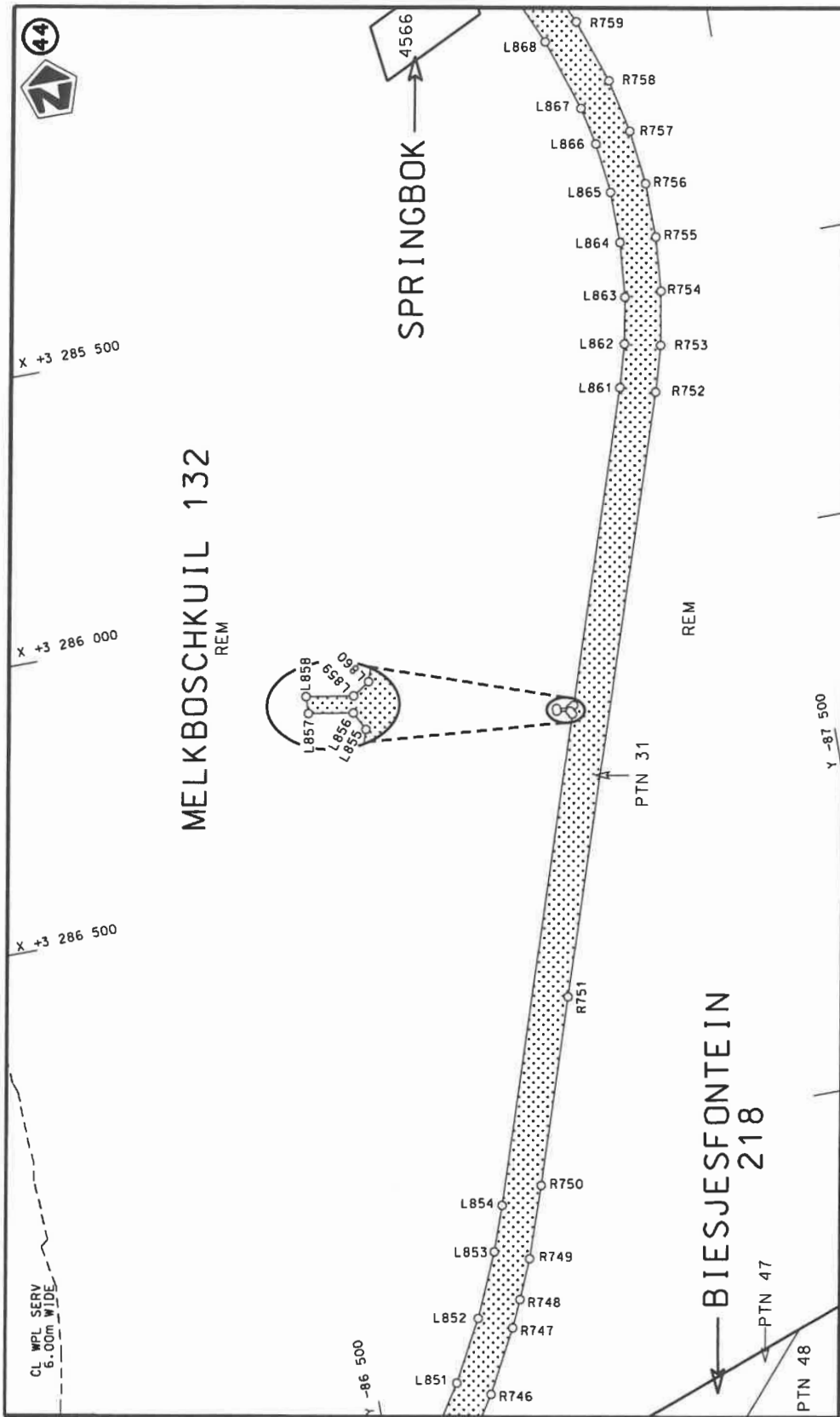
Die Suid Afrikaanse Nasionale Padagentskap MSB Bpk  
The South African National Roads Agency SOC Ltd



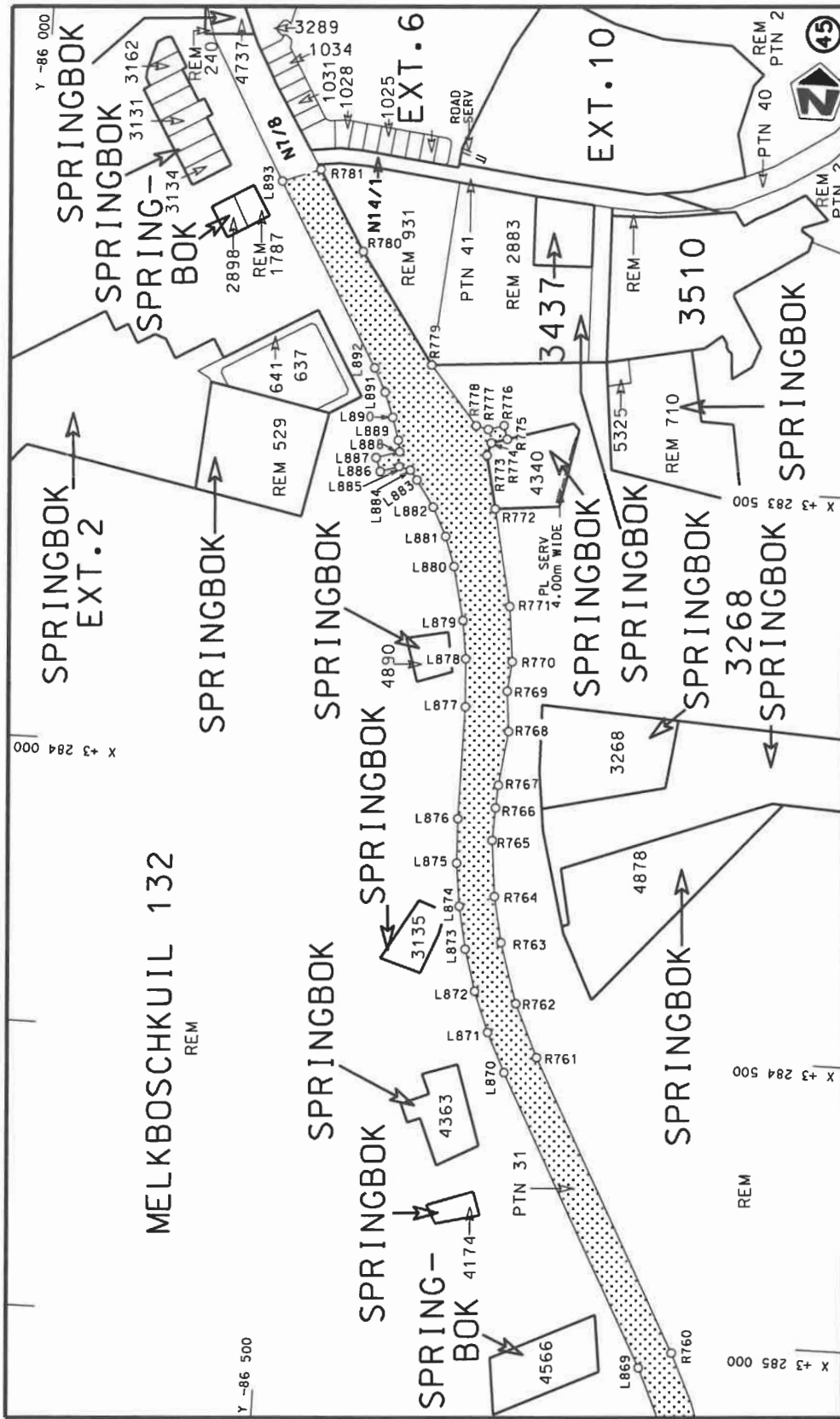
Die Suid-Afrikaanse Nasionale Padagentskap MSB Bpk The South African National Roads Agency SOC Ltd	Die figuur getoon The figure shown		stel die padreserwe voor van 'n gedeelte represents the road reserve of a portion van Nasionale Roete N7 of National Route Section	
			7	Vel van Sheet 23 of 43 Plan P1241/24



Die Suid Afrikaanse Nasionale Padagentskap MSB Bpk The South African National Roads Agency SOC Ltd	Die figuur getoon The figure shown		steldie padreserwe voor van 'n gedeelte represents the road reserve of a portion van Nasionale Roete N7 of National Route N7
Vel van Sheet 24 of 43	Section N7	7	Plan P1241/24



Die Suid-Afrikaanse Nasionale Padagentskap MSB Bpk The South African National Roads Agency SOC Ltd	Die figuur getoon The figure shown		steldie padreserwe voor van 'n gedeelte represents the road reserve of a portion van Nasionale Roete N7 of National Route Section	Vel Sheet 25 of 43
			N7 Section 7	Plan P1241/24



<p>Die Suid Afrikaanse Nasionale Padagentskap MSB Bpk The South African National Roads Agency SOC Ltd</p>	<p>Die figuur getoon The figure shown</p>	<p>stelt die padreserwe voor van 'n gedeelte represents the road reserve of a portion van Nasionale Roete N7 of National Route</p>	<p>Vel Sheet van Sheet 26 of 43</p>
<p>Die figuur getoon The figure shown</p>		<p>7 Seksie Section</p>	<p>Plan P1241/24</p>

PADRESERWE KOÖRDINATE / ROAD RESERVE CO-ORDINATES					
LINKERKANT/LEFT HAND SIDE			REGTERKANT/RIGHT HAND SIDE		
	Y	X	WG 17°	Y	X
L1	-92 391.73	3 381 416.45		R1	-92 387.77 3 381 375.01
L2	-92 389.55	3 381 415.65		R2	-92 385.58 3 381 374.61
L3	-92 329.72	3 381 385.64		R3	-92 376.00 3 381 370.64
L4	-92 304.45	3 381 369.42		R4	-92 329.37 3 381 342.01
L5	-92 280.59	3 381 351.86		R5	-92 305.81 3 381 325.19
L6	-92 258.78	3 381 333.47		R6	-92 283.62 3 381 306.23
L7	-92 227.92	3 381 302.49		R7	-92 262.83 3 381 286.03
L8	-92 191.37	3 381 257.12		R8	-92 225.63 3 381 241.28
L9	-92 173.55	3 381 229.30		R9	-92 208.08 3 381 217.77
L10	-92 149.34	3 381 182.30		R10	-92 194.91 3 381 191.85
L11	-92 138.94	3 381 156.22		R11	-92 138.56 3 381 012.65
L12	-92 123.75	3 381 106.46		R12	-92 117.59 3 380 955.65
L13	-92 104.82	3 381 030.27		R13	-92 105.40 3 380 928.21
L14	-92 095.91	3 381 002.51		R14	-92 085.35 3 380 893.76
L15	-92 089.47	3 380 986.76		R15	-92 040.86 3 380 856.64
L16	-92 077.71	3 380 963.44		R16	-92 006.20 3 380 834.66
L17	-92 062.10	3 380 936.77		R17	-91 984.76 3 380 824.37
L18	-92 053.22	3 380 924.10		R18	-91 956.76 3 380 813.04
L19	-92 046.25	3 380 916.99		R19	-91 929.68 3 380 804.12
L20	-92 012.46	3 380 886.21		R20	-91 900.99 3 380 799.09
L21	-91 977.39	3 380 856.91		R21	-91 872.27 3 380 795.37
L22	-91 963.26	3 380 852.16		R22	-91 813.73 3 380 795.12
L23	-91 935.71	3 380 844.21		R23	-91 752.24 3 380 797.69
L24	-91 905.66	3 380 838.24		R24	-91 691.04 3 380 791.21
L25	-91 864.10	3 380 833.75		R25	-91 641.14 3 380 781.16
L26	-91 835.21	3 380 833.52		R26	-91 615.33 3 380 777.19
L27	-91 806.22	3 380 835.26		R27	-91 601.75 3 380 775.10
L28	-91 777.83	3 380 839.43		R28	-91 564.86 3 380 765.01
L29	-91 723.31	3 380 845.65		R29	-91 533.81 3 380 753.71
L30	-91 694.54	3 380 847.04		R30	-91 525.28 3 380 746.83
L31	-91 680.12	3 380 847.21		R31	-91 481.93 3 380 692.40
L32	-91 656.80	3 380 847.08		R32	-91 473.56 3 380 664.90
L33	-91 622.00	3 380 846.88		R33	-91 462.15 3 380 639.62
L34	-91 592.35	3 380 843.03		R34	-91 450.20 3 380 620.95
L35	-91 557.89	3 380 816.59		R35	-91 398.77 3 380 567.10
L36	-91 512.51	3 380 783.94		R36	-91 350.88 3 380 533.10
L37	-91 479.93	3 380 757.65		R37	-91 124.19 3 380 239.86
L38	-91 476.21	3 380 754.15		R38	-91 108.08 3 380 214.25
L39	-91 424.68	3 380 746.46		R39	-91 094.43 3 380 187.90
L40	-91 425.53	3 380 698.50		R40	-91 082.38 3 380 161.04
L41	-91 416.10	3 380 676.53		R41	-91 072.31 3 380 133.05
L42	-91 147.26	3 380 332.27		R42	-91 060.98 3 380 090.71
L43	-91 114.36	3 380 288.21		R43	-91 020.28 3 379 932.18
L44	-91 095.85	3 380 261.29		R44	-90 977.22 3 379 725.70
L45	-91 069.83	3 380 215.78		R45	-90 960.73 3 379 674.19
L46	-91 048.93	3 380 168.47		R46	-90 951.56 3 379 648.56
L47	-91 027.15	3 380 098.71		R47	-90 921.74 3 379 572.73
L48	-90 951.92	3 379 766.58		R48	-90 863.75 3 379 441.78
L49	-90 931.35	3 379 695.92		R49	-90 685.75 3 379 054.00
L50	-90 906.68	3 379 625.21		R50	-90 411.61 3 378 456.55
L51	-90 888.47	3 379 579.61		R51	-90 369.58 3 378 362.51

Vel	27	Van	43	P1241/24
Sheet		of		

PADRESERWE KOÖRDINATE / ROAD RESERVE CO-ORDINATES						
LINKERKANT/LEFT HAND SIDE				REGTERKANT/RIGHT HAND SIDE		
	Y	X	WG 17°		Y	X
L52	-90 847.44	3 379	489.44	R52	-90 358.72	3 378 335.55
L53	-90 816.02	3 379	493.17	R53	-90 348.53	3 378 308.38
L54	-90 806.05	3 379	471.63	R54	-90 329.92	3 378 253.22
L55	-90 823.27	3 379	461.52	R55	-90 309.97	3 378 183.28
L56	-90 830.09	3 379	451.73	R56	-90 302.88	3 378 154.98
L57	-90 751.69	3 379	281.39	R57	-90 290.86	3 378 097.96
L58	-90 676.91	3 379	118.18	R58	-90 285.69	3 378 069.07
L59	-90 456.34	3 378	637.46	R59	-90 277.44	3 378 011.21
L60	-90 339.03	3 378	379.15	R60	-90 271.52	3 377 953.24
L61	-90 302.11	3 378	280.89	R61	-90 267.96	3 377 894.96
L62	-90 284.62	3 378	223.16	R62	-90 267.29	3 377 861.67
L63	-90 277.07	3 378	194.51	R63	-90 264.51	3 377 353.42
L64	-90 263.39	3 378	137.20	R64	-90 262.10	3 376 857.73
L65	-90 260.06	3 378	121.21	R65	-90 260.26	3 376 492.14
L66	-90 254.29	3 378	089.75	R66	-90 261.74	3 376 363.66
L67	-90 250.82	3 378	068.06	R67	-90 264.72	3 376 320.37
L68	-90 249.59	3 378	060.28	R68	-90 278.10	3 376 190.86
L69	-90 241.24	3 378	000.75	R69	-90 301.80	3 376 033.51
L70	-90 233.57	3 377	895.95	R70	-90 366.25	3 375 705.80
L71	-90 232.38	3 377	820.95	R71	-90 492.18	3 375 064.86
L72	-90 231.59	3 377	641.88	R72	-90 493.15	3 375 059.93
L73	-90 229.67	3 377	282.52	R73	-90 507.67	3 374 990.95
L74	-90 224.03	3 376	743.61	R74	-90 512.61	3 374 971.23
L75	-90 222.65	3 376	433.71	R75	-90 530.91	3 374 898.08
L76	-90 225.85	3 376	344.07	R76	-90 538.16	3 374 870.98
L77	-90 233.16	3 376	254.37	R77	-90 545.39	3 374 845.77
L78	-90 248.23	3 376	135.68	R78	-90 576.15	3 374 754.17
L79	-90 258.37	3 376	076.46	R79	-90 605.11	3 374 677.31
L80	-90 326.12	3 375	730.16	R80	-90 789.68	3 374 183.86
L81	-90 312.51	3 375	723.34	R81	-90 855.17	3 374 007.31
L82	-90 299.09	3 375	720.51	R82	-90 872.24	3 373 955.64
L83	-90 307.39	3 375	696.94	R83	-90 887.77	3 373 903.10
L84	-90 332.03	3 375	700.53	R84	-90 894.42	3 373 876.58
L85	-90 336.79	3 375	676.07	R85	-90 903.47	3 373 836.67
L86	-90 319.08	3 375	672.44	R86	-90 910.58	3 373 800.40
L87	-90 373.24	3 375	490.76	R87	-90 925.33	3 373 725.26
L88	-90 455.32	3 375	072.75	R88	-90 938.50	3 373 639.48
L89	-90 456.64	3 375	066.05	R89	-90 945.01	3 373 582.02
L90	-90 475.74	3 374	969.98	R90	-90 950.51	3 373 510.31
L91	-90 479.43	3 374	951.44	R91	-90 953.29	3 373 447.47
L92	-90 485.97	3 374	922.95	R92	-90 973.91	3 372 502.85
L93	-90 492.99	3 374	894.85	R93	-90 978.51	3 372 290.69
L94	-90 508.53	3 374	838.43	R94	-90 984.27	3 372 049.59
L95	-90 516.90	3 374	810.91	R95	-90 986.04	3 372 020.91
L96	-90 540.68	3 374	742.00	R96	-90 991.86	3 371 962.49
L97	-90 633.84	3 374	492.96	R97	-91 000.20	3 371 896.26
L98	-90 830.73	3 373	960.57	R98	-91 030.57	3 371 746.92
L99	-90 852.27	3 373	890.87	R99	-91 032.68	3 371 685.98
L100	-90 874.03	3 373	805.82	R100	-91 032.50	3 371 673.88
L101	-90 895.97	3 373	691.06	R101	-91 030.79	3 371 647.57
L102	-90 907.83	3 373	604.08	R102	-91 026.51	3 371 617.15

Vel Sheet	28	Van of	43	P1241/24
--------------	----	-----------	----	----------



PADRESERWE KOÖRDINATE / ROAD RESERVE CO-ORDINATES						
LINKERKANT/LEFT HAND SIDE				REGTERKANT/RIGHT HAND SIDE		
	Y	X	WG 17°		Y	X
L103	-90 917.10	3 373	488.08	R103	-91 013.66	3 371 560.80
L104	-90 922.45	3 373	266.83	R104	-91 005.21	3 371 534.04
L105	-90 931.92	3 372	837.56	R105	-90 952.60	3 371 410.65
L106	-90 944.21	3 372	289.55	R106	-90 941.53	3 371 383.18
L107	-90 944.07	3 372	202.65	R107	-90 926.52	3 371 340.17
L108	-90 954.87	3 371	983.84	R108	-90 922.41	3 371 328.35
L109	-90 944.13	3 371	925.54	R109	-90 913.67	3 371 298.87
L110	-90 944.14	3 371	910.98	R110	-90 900.01	3 371 241.86
L111	-90 949.75	3 371	893.54	R111	-90 698.23	3 370 215.37
L112	-90 967.65	3 371	837.82	R112	-90 643.49	3 369 929.90
L113	-90 975.39	3 371	813.73	R113	-90 457.54	3 368 701.64
L114	-90 986.44	3 371	763.14	R114	-90 120.85	3 367 781.77
L115	-90 994.16	3 371	704.95	R115	-90 096.04	3 367 716.23
L116	-90 994.44	3 371	671.90	R116	-90 081.78	3 367 682.21
L117	-90 990.81	3 371	647.64	R117	-90 069.89	3 367 655.61
L118	-90 975.27	3 371	589.87	R118	-90 044.48	3 367 603.01
L119	-90 965.43	3 371	562.77	R119	-90 001.43	3 367 525.79
L120	-90 958.65	3 371	549.57	R120	-89 969.25	3 367 475.34
L121	-90 951.01	3 371	538.23	R121	-89 984.99	3 367 463.11
L122	-90 941.81	3 371	525.15	R122	-89 972.89	3 367 442.30
L123	-90 932.03	3 371	511.44	R123	-89 953.86	3 367 454.47
L124	-90 923.99	3 371	454.01	R124	-89 936.15	3 367 429.91
L125	-90 920.83	3 371	439.29	R125	-89 910.92	3 367 396.65
L126	-90 916.89	3 371	426.07	R126	-89 804.46	3 367 254.71
L127	-90 887.82	3 371	343.06	R127	-89 639.26	3 367 034.44
L128	-90 879.34	3 371	314.88	R128	-89 525.00	3 366 881.56
L129	-90 868.64	3 371	272.20	R129	-89 495.96	3 366 835.00
L130	-90 805.15	3 370	956.68	R130	-89 483.48	3 366 808.76
L131	-90 737.38	3 370	612.83	R131	-89 471.25	3 366 776.19
L132	-90 717.13	3 370	494.49	R132	-89 457.02	3 366 723.64
L133	-90 615.28	3 369	975.10	R133	-89 446.36	3 366 547.41
L134	-90 602.96	3 369	902.66	R134	-89 433.48	3 366 468.05
L135	-90 596.90	3 369	865.76	R135	-89 413.70	3 366 431.87
L136	-90 593.79	3 369	845.06	R136	-89 381.71	3 366 388.06
L137	-90 560.48	3 369	621.26	R137	-89 344.60	3 366 348.03
L138	-90 515.21	3 369	336.21	R138	-89 296.27	3 366 300.06
L139	-90 445.07	3 368	861.74	R139	-89 271.95	3 366 268.19
L140	-90 443.32	3 368	852.85	R140	-89 250.74	3 366 233.79
L141	-90 425.91	3 368	765.40	R141	-89 242.81	3 366 207.83
L142	-90 411.65	3 368	708.90	R142	-89 229.65	3 366 140.99
L143	-90 391.58	3 368	641.47	R143	-89 225.12	3 366 113.61
L144	-90 375.72	3 368	595.05	R144	-89 240.01	3 365 925.82
L145	-90 325.33	3 368	457.01	R145	-89 276.54	3 365 695.71
L146	-90 185.78	3 368	073.52	R146	-89 293.29	3 365 634.15
L147	-90 060.70	3 367	730.96	R147	-89 317.80	3 365 586.11
L148	-90 038.03	3 367	677.37	R148	-89 360.00	3 365 502.75
L149	-90 012.88	3 367	625.07	R149	-89 366.14	3 365 475.81
L150	-89 985.15	3 367	574.12	R150	-89 369.22	3 365 381.98
L151	-89 945.35	3 367	508.09	R151	-89 350.83	3 365 319.48
L152	-89 910.48	3 367	529.24	R152	-89 312.99	3 365 243.13
L153	-89 918.87	3 367	513.60	R153	-89 316.90	3 365 223.65

Vel	29	Van	43	P1241/24
Sheet		of		

PADRESERWE KOÖRDINATE / ROAD RESERVE CO-ORDINATES						
LINKERKANT/LEFT HAND SIDE			REGTERKANT/RIGHT HAND SIDE			
	Y	X	WG 17°		Y	X
L154	-89 909.06	3 367	500.34	R154	-89 287.17	3 365 210.60
L155	-89 929.76	3 367	486.23	R155	-89 278.89	3 365 198.49
L156	-89 910.26	3 367	459.19	R156	-89 260.59	3 365 179.56
L157	-89 839.44	3 367	364.68	R157	-89 239.70	3 365 162.92
L158	-89 501.11	3 366	913.18	R158	-89 162.40	3 365 109.82
L159	-89 478.63	3 366	880.76	R159	-89 142.32	3 365 093.25
L160	-89 446.94	3 366	820.49	R160	-89 123.81	3 365 074.78
L161	-89 432.84	3 366	782.10	R161	-89 098.98	3 365 045.86
L162	-89 422.35	3 366	742.37	R162	-88 980.87	3 364 882.58
L163	-89 418.31	3 366	715.19	R163	-88 974.34	3 364 814.01
L164	-89 408.56	3 366	552.32	R164	-88 970.27	3 364 787.60
L165	-89 389.96	3 366	480.39	R165	-88 964.39	3 364 760.85
L166	-89 334.40	3 366	395.75	R166	-88 960.38	3 364 745.29
L167	-89 245.07	3 366	293.04	R167	-88 950.96	3 364 719.86
L168	-89 221.57	3 366	259.77	R168	-88 932.57	3 364 683.70
L169	-89 201.57	3 366	223.99	R169	-88 918.65	3 364 660.56
L170	-89 184.05	3 366	172.41	R170	-88 901.21	3 364 640.23
L171	-89 175.06	3 366	129.13	R171	-88 882.37	3 364 621.49
L172	-89 178.02	3 366	108.64	R172	-88 863.17	3 364 604.61
L173	-89 198.72	3 365	975.32	R173	-88 841.09	3 364 590.85
L174	-89 223.21	3 365	691.47	R174	-88 794.03	3 364 564.28
L175	-89 227.65	3 365	639.97	R175	-88 775.67	3 364 548.26
L176	-89 233.92	3 365	620.46	R176	-88 617.37	3 364 517.78
L177	-89 239.13	3 365	612.02	R177	-88 564.87	3 364 504.43
L178	-89 301.13	3 365	511.46	R178	-88 520.41	3 364 489.06
L179	-89 312.43	3 365	489.56	R179	-88 483.08	3 364 470.26
L180	-89 320.62	3 365	464.48	R180	-88 473.39	3 364 463.83
L181	-89 325.20	3 365	438.00	R181	-88 449.34	3 364 447.87
L182	-89 320.71	3 365	411.24	R182	-88 427.43	3 364 429.86
L183	-89 320.53	3 365	384.38	R183	-88 407.52	3 364 410.70
L184	-89 310.78	3 365	331.35	R184	-88 389.43	3 364 390.04
L185	-89 305.15	3 365	307.64	R185	-88 356.32	3 364 345.91
L186	-89 301.69	3 365	299.54	R186	-88 153.11	3 364 040.80
L187	-89 294.19	3 365	282.00	R187	-88 005.46	3 363 818.43
L188	-89 279.04	3 365	259.27	R188	-87 974.54	3 363 773.09
L189	-89 262.10	3 365	241.49	R189	-87 930.60	3 363 713.56
L190	-89 152.15	3 365	157.81	R190	-87 875.80	3 363 648.76
L191	-89 130.50	3 365	141.75	R191	-87 800.83	3 363 571.31
L192	-89 125.22	3 365	138.29	R192	-87 687.00	3 363 463.72
L193	-89 034.54	3 365	097.82	R193	-87 660.21	3 363 438.62
L194	-88 999.76	3 365	056.27	R194	-87 556.83	3 363 341.88
L195	-88 993.43	3 365	046.33	R195	-87 473.99	3 363 263.82
L196	-88 973.60	3 365	010.37	R196	-87 459.27	3 363 245.10
L197	-88 966.20	3 364	990.28	R197	-87 295.16	3 363 089.15
L198	-88 956.76	3 364	960.47	R198	-87 261.22	3 363 060.54
L199	-88 949.70	3 364	929.22	R199	-87 223.65	3 363 027.95
L200	-88 924.19	3 364	756.15	R200	-86 944.57	3 362 765.00
L201	-88 919.38	3 364	743.61	R201	-86 895.24	3 362 708.25
L202	-88 908.64	3 364	721.33	R202	-86 844.05	3 362 637.69
L203	-88 890.85	3 364	692.51	R203	-86 785.59	3 362 534.23
L204	-88 877.75	3 364	674.18	R204	-86 748.18	3 362 445.08

Vel  
Sheet

30

Van  
of

43

P1241/24

PADRESERWE KOÖRDINATE / ROAD RESERVE CO-ORDINATES					
LINKERKANT/LEFT HAND SIDE			REGTERKANT/RIGHT HAND SIDE		
	Y	X	WG 17°	Y	X
L205	-88 860.95	3 364 652.90		R205	-86 635.67 3 362 039.14
L206	-88 841.42	3 364 634.14		R206	-86 590.37 3 361 871.48
L207	-88 819.19	3 364 617.73		R207	-86 624.13 3 361 490.30
L208	-88 784.38	3 364 600.69		R208	-86 513.40 3 361 565.37
L209	-88 745.81	3 364 587.04		R209	-86 433.60 3 361 331.49
L210	-88 650.33	3 364 564.43		R210	-86 331.12 3 361 109.41
L211	-88 525.97	3 364 534.79		R211	-86 291.48 3 361 035.98
L212	-88 503.68	3 364 524.11		R212	-86 183.46 3 360 857.35
L213	-88 439.21	3 364 493.26		R213	-85 907.15 3 360 405.74
L214	-88 373.24	3 364 432.97		R214	-85 830.32 3 360 279.26
L215	-88 319.51	3 364 361.53		R215	-85 714.27 3 360 088.37
L216	-88 252.85	3 364 259.91		R216	-85 647.42 3 359 943.93
L217	-87 951.89	3 363 808.22		R217	-85 614.45 3 359 825.45
L218	-87 907.90	3 363 748.83		R218	-85 576.62 3 359 570.25
L219	-87 876.12	3 363 709.32		R219	-85 472.83 3 358 823.68
L220	-87 841.93	3 363 669.80		R220	-85 440.86 3 358 429.65
L221	-87 811.80	3 363 637.22		R221	-85 440.89 3 358 429.22
L222	-87 760.34	3 363 585.47		R222	-85 441.29 3 358 424.52
L223	-87 261.27	3 363 115.92		R223	-85 453.06 3 358 282.36
L224	-86 952.50	3 362 827.08		R224	-85 509.21 3 357 910.22
L225	-86 931.25	3 362 806.13		R225	-85 570.90 3 357 504.86
L226	-86 890.94	3 362 762.51		R226	-85 590.56 3 357 485.26
L227	-86 853.36	3 362 716.39		R227	-85 592.27 3 357 472.25
L228	-86 818.72	3 362 669.21		R228	-85 579.99 3 357 444.97
L229	-86 787.13	3 362 618.67		R229	-85 681.24 3 356 777.53
L230	-86 758.83	3 362 566.01		R230	-85 729.20 3 356 461.52
L231	-86 734.03	3 362 513.30		R231	-85 747.54 3 356 341.02
L232	-86 707.37	3 362 443.55		R232	-85 844.56 3 355 702.15
L233	-86 682.48	3 362 357.64		R233	-85 845.13 3 355 702.28
L234	-86 507.08	3 361 709.14		R234	-85 878.01 3 355 480.66
L235	-86 478.69	3 361 683.91		R235	-85 883.24 3 355 481.72
L236	-86 473.62	3 361 666.98		R236	-85 911.84 3 355 296.87
L237	-86 475.52	3 361 606.71		R237	-85 979.28 3 354 761.72
L238	-86 393.39	3 361 344.53		R238	-85 999.21 3 354 517.22
L239	-86 367.43	3 361 276.23		R239	-86 054.80 3 353 646.80
L240	-86 351.37	3 361 240.28		R240	-86 057.32 3 353 606.41
L241	-86 319.56	3 361 171.52		R241	-86 076.39 3 353 303.62
L242	-86 291.09	3 361 115.96		R242	-86 081.95 3 353 245.35
L243	-86 272.59	3 361 081.35		R243	-86 110.07 3 353 056.92
L244	-86 235.64	3 361 015.56		R244	-86 127.83 3 352 973.81
L245	-86 150.63	3 360 877.31		R245	-86 142.45 3 352 915.84
L246	-85 875.86	3 360 426.83		R246	-86 156.09 3 352 867.49
L247	-85 768.26	3 360 318.04		R247	-86 174.19 3 352 872.12
L248	-85 673.72	3 360 094.12		R248	-86 181.13 3 352 848.68
L249	-85 628.71	3 360 004.79		R249	-86 163.20 3 352 843.70
L250	-85 597.50	3 359 917.46		R250	-86 184.89 3 352 776.10
L251	-85 581.45	3 359 856.89		R251	-86 200.26 3 352 733.02
L252	-85 552.46	3 359 715.95		R252	-86 254.51 3 352 591.12
L253	-85 545.55	3 359 626.12		R253	-86 271.08 3 352 540.68
L254	-85 435.79	3 358 835.59		R254	-86 278.69 3 352 514.41
L255	-85 414.26	3 358 681.93		R255	-86 282.18 3 352 501.10

Vel 31 Van 43  
Sheet of

P1241/24

PADRESERWE KOÖRDINATE / ROAD RESERVE CO-ORDINATES						
LINKERKANT/LEFT HAND SIDE				REGTERKANT/RIGHT HAND SIDE		
	Y	X	WG 17°		Y	X
L256	-85 407.99	3 358	626.10	R256	-86 288.54	3 352 474.67
L257	-85 402.94	3 358	555.50	R257	-86 294.42	3 352 447.83
L258	-85 401.31	3 358	498.03	R258	-86 301.35	3 352 407.95
L259	-85 402.49	3 358	429.69	R259	-86 304.07	3 352 387.24
L260	-85 404.90	3 358	376.08	R260	-86 308.15	3 352 353.75
L261	-85 409.67	3 358	322.32	R261	-86 310.16	3 352 326.79
L262	-85 416.52	3 358	269.20	R262	-86 311.69	3 352 294.35
L263	-85 467.00	3 357	933.20	R263	-86 312.38	3 352 253.38
L264	-85 533.78	3 357	496.20	R264	-86 299.13	3 351 622.16
L265	-85 527.56	3 357	475.07	R265	-86 298.23	3 351 536.33
L266	-85 529.51	3 357	462.78	R266	-86 266.82	3 349 870.17
L267	-85 542.13	3 357	439.64	R267	-86 257.09	3 349 357.41
L268	-85 624.62	3 356	897.80	R268	-86 236.59	3 348 276.28
L269	-85 709.83	3 356	336.29	R269	-86 227.86	3 347 803.78
L270	-85 840.95	3 355	472.69	R270	-86 210.73	3 346 911.55
L271	-85 924.54	3 354	908.48	R271	-86 222.19	3 346 899.29
L272	-85 936.24	3 354	806.26	R272	-86 252.78	3 346 898.48
L273	-85 961.31	3 354	516.97	R273	-86 255.15	3 346 869.99
L274	-86 019.12	3 353	612.40	R274	-86 209.92	3 346 871.72
L275	-86 020.68	3 353	588.84	R275	-86 203.84	3 346 554.22
L276	-86 021.44	3 353	577.34	R276	-86 202.49	3 346 469.14
L277	-86 031.90	3 353	410.45	R277	-86 203.52	3 346 401.13
L278	-86 064.10	3 353	097.69	R278	-86 206.46	3 346 346.66
L279	-86 070.67	3 353	061.74	R279	-86 210.39	3 346 305.94
L280	-86 081.85	3 353	005.51	R280	-86 217.87	3 346 251.70
L281	-86 100.72	3 352	925.55	R281	-86 290.50	3 345 895.47
L282	-86 107.73	3 352	899.09	R282	-86 338.04	3 345 670.64
L283	-86 119.26	3 352	857.71	R283	-86 350.37	3 345 617.53
L284	-86 101.32	3 352	853.01	R284	-86 357.43	3 345 590.76
L285	-86 107.88	3 352	831.30	R285	-86 365.06	3 345 564.17
L286	-86 117.02	3 352	831.87	R286	-86 382.62	3 345 514.31
L287	-86 126.42	3 352	834.40	R287	-86 395.88	3 345 482.29
L288	-86 143.24	3 352	780.70	R288	-86 418.51	3 345 436.67
L289	-86 168.04	3 352	710.82	R289	-86 438.16	3 345 401.13
L290	-86 224.87	3 352	561.32	R290	-86 452.39	3 345 377.81
L291	-86 239.70	3 352	514.52	R291	-86 466.95	3 345 354.79
L292	-86 245.37	3 352	493.69	R292	-86 482.18	3 345 332.55
L293	-86 253.79	3 352	458.10	R293	-86 514.96	3 345 289.57
L294	-86 259.38	3 352	431.13	R294	-86 559.47	3 345 238.38
L295	-86 263.85	3 352	404.17	R295	-86 578.44	3 345 218.74
L296	-86 269.35	3 352	363.37	R296	-86 704.80	3 345 114.49
L297	-86 271.78	3 352	336.25	R297	-86 841.01	3 345 009.88
L298	-86 273.42	3 352	307.20	R298	-87 126.00	3 344 791.01
L299	-86 272.85	3 352	169.69	R299	-87 136.52	3 344 782.21
L300	-86 247.62	3 350	862.38	R300	-87 156.99	3 344 764.11
L301	-86 230.29	3 349	937.37	R301	-87 177.26	3 344 745.68
L302	-86 219.31	3 349	356.34	R302	-87 197.37	3 344 726.68
L303	-86 210.79	3 348	913.43	R303	-87 216.74	3 344 707.51
L304	-86 201.26	3 348	406.68	R304	-87 235.42	3 344 687.68
L305	-86 199.27	3 348	292.18	R305	-87 253.74	3 344 667.21
L306	-86 172.70	3 346	902.45	R306	-87 288.59	3 344 624.85

Vel Sheet	32	Van of	43	P1241/24
--------------	----	-----------	----	----------

PADRESERWE KOÖRDINATE / ROAD RESERVE CO-ORDINATES					
LINKERKANT/LEFT HAND SIDE			REGTERKANT/RIGHT HAND SIDE		
	Y	X	WG 17°	Y	X
L307	-86 127.03	3 346	903.47	R307	-87 316.87 3 344 584.88
L308	-86 131.05	3 346	878.89	R308	-87 456.52 3 344 368.92
L309	-86 172.18	3 346	878.02	R309	-87 643.39 3 344 076.88
L310	-86 164.86	3 346	492.69	R310	-87 662.74 3 344 052.35
L311	-86 164.78	3 346	465.02	R311	-87 681.58 3 344 032.21
L312	-86 164.99	3 346	437.99	R312	-87 701.33 3 344 013.45
L313	-86 165.70	3 346	410.34	R313	-87 721.81 3 343 995.63
L314	-86 168.40	3 346	355.80	R314	-87 743.50 3 343 978.93
L315	-86 170.61	3 346	324.81	R315	-87 766.61 3 343 963.42
L316	-86 176.10	3 346	272.84	R316	-87 789.63 3 343 949.40
L317	-86 179.71	3 346	245.74	R317	-87 813.78 3 343 936.77
L318	-86 183.74	3 346	218.52	R318	-87 838.50 3 343 925.35
L319	-86 188.41	3 346	191.54	R319	-87 864.20 3 343 915.42
L320	-86 196.17	3 346	150.76	R320	-87 890.44 3 343 907.45
L321	-86 297.18	3 345	665.76	R321	-87 917.19 3 343 901.39
L322	-86 300.36	3 345	650.90	R322	-87 944.15 3 343 896.49
L323	-86 306.98	3 345	623.62	R323	-87 971.25 3 343 892.45
L324	-86 314.07	3 345	597.19	R324	-87 998.65 3 343 890.65
L325	-86 326.10	3 345	557.90	R325	-88 026.11 3 343 890.35
L326	-86 335.07	3 345	532.06	R326	-88 053.44 3 343 891.62
L327	-86 345.34	3 345	505.22	R327	-88 080.85 3 343 894.79
L328	-86 364.59	3 345	458.84	R328	-88 107.61 3 343 899.46
L329	-86 370.47	3 345	446.26	R329	-88 134.01 3 343 905.25
L330	-86 376.43	3 345	434.14	R330	-88 160.71 3 343 912.58
L331	-86 389.17	3 345	409.72	R331	-88 253.30 3 343 939.80
L332	-86 402.37	3 345	385.85	R332	-88 277.78 3 343 945.61
L333	-86 409.21	3 345	374.05	R333	-88 331.39 3 343 957.60
L334	-86 423.58	3 345	350.86	R334	-88 382.53 3 343 964.68
L335	-86 438.54	3 345	327.98	R335	-88 412.96 3 343 968.23
L336	-86 460.14	3 345	297.11	R336	-88 440.48 3 343 969.40
L337	-86 476.53	3 345	275.37	R337	-88 470.61 3 343 969.33
L338	-86 493.66	3 345	254.08	R338	-88 481.22 3 343 968.46
L339	-86 511.28	3 345	233.02	R339	-88 535.15 3 343 960.54
L340	-86 529.51	3 345	212.72	R340	-88 577.79 3 343 950.53
L341	-86 538.95	3 345	202.67	R341	-88 617.11 3 343 939.89
L342	-86 550.91	3 345	190.75	R342	-88 643.07 3 343 932.12
L343	-86 573.21	3 345	169.83	R343	-88 669.00 3 343 922.80
L344	-86 614.18	3 345	134.60	R344	-88 799.59 3 343 864.58
L345	-86 624.61	3 345	126.02	R345	-88 964.49 3 343 791.73
L346	-86 799.22	3 344	991.97	R346	-89 123.17 3 343 713.00
L347	-87 082.85	3 344	773.87	R347	-89 378.52 3 343 582.76
L348	-87 124.00	3 344	739.72	R348	-89 434.45 3 343 548.51
L349	-87 153.63	3 344	712.55	R349	-89 530.82 3 343 468.47
L350	-87 182.05	3 344	684.40	R350	-89 591.93 3 343 387.11
L351	-87 209.66	3 344	655.13	R351	-89 613.31 3 343 355.05
L352	-87 218.18	3 344	645.06	R352	-89 695.10 3 343 194.96
L353	-87 234.50	3 344	624.16	R353	-89 721.22 3 343 178.72
L354	-87 427.45	3 344	328.46	R354	-89 734.68 3 343 145.38
L355	-87 430.89	3 344	323.38	R355	-89 719.50 3 343 147.80
L356	-87 433.96	3 344	318.86	R356	-89 729.09 3 343 010.64
L357	-87 440.35	3 344	304.63	R357	-89 719.48 3 342 916.23

Vel Sheet	33	Van of	43	P1241/24
--------------	----	-----------	----	----------

PADRESERWE KOÖRDINATE / ROAD RESERVE CO-ORDINATES						
LINKERKANT/LEFT HAND SIDE				REGTERKANT/RIGHT HAND SIDE		
	Y	X	WG 17°		Y	X
L358	-87 494.37	3 344	222.93	R358	-89 540.85	3 341 963.75
L359	-87 511.06	3 344	197.71	R359	-89 408.65	3 341 261.90
L360	-87 595.82	3 344	069.92	R360	-89 349.93	3 340 845.35
L361	-87 620.51	3 344	037.40	R361	-89 352.75	3 340 790.77
L362	-87 638.36	3 344	017.71	R362	-89 368.57	3 340 685.00
L363	-87 658.67	3 343	999.26	R363	-89 378.06	3 340 645.87
L364	-87 680.51	3 343	980.52	R364	-89 384.98	3 340 619.43
L365	-87 699.81	3 343	964.32	R365	-89 411.81	3 340 542.49
L366	-87 720.24	3 343	947.69	R366	-89 420.84	3 340 519.33
L367	-87 742.53	3 343	932.76	R367	-89 429.76	3 340 496.50
L368	-87 765.97	3 343	919.47	R368	-89 427.64	3 340 429.72
L369	-87 801.43	3 343	900.14	R369	-89 435.82	3 340 402.31
L370	-87 825.68	3 343	887.77	R370	-89 475.81	3 340 331.69
L371	-87 850.18	3 343	877.86	R371	-89 471.79	3 340 313.61
L372	-87 876.50	3 343	869.73	R372	-89 494.79	3 340 262.64
L373	-87 902.39	3 343	862.99	R373	-89 510.69	3 340 241.15
L374	-87 929.11	3 343	858.07	R374	-89 570.52	3 340 106.59
L375	-87 979.70	3 343	853.85	R375	-89 584.19	3 340 033.13
L376	-88 007.10	3 343	852.94	R376	-89 591.26	3 339 974.64
L377	-88 034.16	3 343	853.71	R377	-89 595.38	3 339 912.21
L378	-88 061.25	3 343	855.01	R378	-89 601.84	3 339 779.69
L379	-88 079.01	3 343	856.39	R379	-89 608.27	3 339 638.15
L380	-88 115.36	3 343	862.25	R380	-89 642.43	3 338 920.65
L381	-88 141.66	3 343	867.49	R381	-89 648.74	3 338 794.78
L382	-88 168.11	3 343	874.05	R382	-89 653.14	3 338 746.52
L383	-88 194.18	3 343	881.53	R383	-89 656.13	3 338 626.09
L384	-88 272.20	3 343	904.95	R384	-89 663.56	3 338 438.98
L385	-88 337.03	3 343	921.66	R385	-89 671.42	3 338 206.07
L386	-88 369.88	3 343	926.32	R386	-89 628.88	3 338 091.25
L387	-88 410.15	3 343	927.28	R387	-89 589.60	3 337 919.48
L388	-88 477.60	3 343	924.29	R388	-89 584.47	3 337 892.34
L389	-88 531.65	3 343	919.20	R389	-89 583.06	3 337 878.92
L390	-88 571.22	3 343	913.03	R390	-89 581.23	3 337 851.68
L391	-88 606.55	3 343	903.52	R391	-89 580.57	3 337 812.52
L392	-88 632.81	3 343	895.03	R392	-89 580.91	3 337 798.86
L393	-88 657.98	3 343	885.14	R393	-89 584.52	3 337 772.02
L394	-88 683.29	3 343	874.65	R394	-89 586.96	3 337 759.00
L395	-88 944.23	3 343	749.57	R395	-89 608.67	3 337 697.13
L396	-89 102.70	3 343	674.37	R396	-89 653.13	3 337 654.78
L397	-89 241.22	3 343	608.52	R397	-89 650.68	3 337 632.75
L398	-89 351.80	3 343	554.87	R398	-89 677.73	3 337 580.35
L399	-89 373.96	3 343	541.85	R399	-89 682.34	3 337 572.66
L400	-89 398.54	3 343	527.03	R400	-89 684.65	3 337 568.68
L401	-89 456.70	3 343	484.06	R401	-89 731.91	3 337 503.07
L402	-89 482.69	3 343	462.96	R402	-89 771.60	3 337 457.57
L403	-89 501.30	3 343	443.12	R403	-89 788.42	3 337 404.18
L404	-89 560.75	3 343	369.25	R404	-89 809.28	3 337 357.26
L405	-89 583.05	3 343	334.70	R405	-89 824.38	3 337 303.97
L406	-89 602.95	3 343	298.67	R406	-89 834.26	3 337 256.06
L407	-89 614.90	3 343	273.94	R407	-89 834.70	3 337 253.92
L408	-89 634.15	3 343	224.38	R408	-89 838.65	3 337 176.07

Vel Sheet	34	Van of	43	P1241/24
--------------	----	-----------	----	----------

PADRESERWE KOÖRDINATE / ROAD RESERVE CO-ORDINATES						
LINKERKANT/LEFT HAND SIDE				REGTERKANT/RIGHT HAND SIDE		
	Y	X	WG 17°		Y	X
L409	-89 647.21	3 343	182.06	R409	-89 839.08	3 337 167.50
L410	-89 615.50	3 343	174.20	R410	-89 832.72	3 337 158.10
L411	-89 624.78	3 343	151.56	R411	-89 830.89	3 337 155.39
L412	-89 652.98	3 343	158.15	R412	-89 802.43	3 337 128.75
L413	-89 658.42	3 343	130.01	R413	-89 800.55	3 337 127.00
L414	-89 663.96	3 343	089.50	R414	-89 738.83	3 337 081.48
L415	-89 665.62	3 343	062.61	R415	-89 662.82	3 337 025.41
L416	-89 666.34	3 343	035.01	R416	-89 657.34	3 337 021.38
L417	-89 665.90	3 343	007.43	R417	-89 586.61	3 336 969.62
L418	-89 664.32	3 342	980.28	R418	-89 546.77	3 336 940.46
L419	-89 656.37	3 342	923.64	R419	-89 509.63	3 336 914.86
L420	-89 571.77	3 342	472.29	R420	-89 457.05	3 336 878.63
L421	-89 486.43	3 342	019.10	R421	-89 436.08	3 336 862.04
L422	-89 424.82	3 341	690.59	R422	-89 415.76	3 336 843.48
L423	-89 416.41	3 341	668.71	R423	-89 399.23	3 336 822.08
L424	-89 420.01	3 341	665.00	R424	-89 386.11	3 336 798.36
L425	-89 340.96	3 341	244.21	R425	-89 380.85	3 336 785.71
L426	-89 292.89	3 340	975.56	R426	-89 351.08	3 336 756.46
L427	-89 288.98	3 340	934.41	R427	-89 328.51	3 336 668.89
L428	-89 287.29	3 340	908.05	R428	-89 328.64	3 336 601.35
L429	-89 286.49	3 340	878.55	R429	-89 328.60	3 336 596.43
L430	-89 286.56	3 340	850.24	R430	-89 344.47	3 336 599.44
L431	-89 287.53	3 340	823.75	R431	-89 351.99	3 336 583.41
L432	-89 290.02	3 340	782.60	R432	-89 430.32	3 336 292.17
L433	-89 293.00	3 340	755.37	R433	-89 455.38	3 336 185.93
L434	-89 296.68	3 340	727.82	R434	-89 461.15	3 336 160.54
L435	-89 300.83	3 340	701.00	R435	-89 465.64	3 336 140.84
L436	-89 318.94	3 340	593.23	R436	-89 533.59	3 335 842.60
L437	-89 323.67	3 340	572.27	R437	-89 558.22	3 335 735.84
L438	-89 364.89	3 340	482.32	R438	-89 575.40	3 335 671.26
L439	-89 384.99	3 340	438.75	R439	-89 604.51	3 335 520.38
L440	-89 410.94	3 340	373.61	R440	-89 610.32	3 335 466.12
L441	-89 455.72	3 340	258.69	R441	-89 613.48	3 335 424.87
L442	-89 462.75	3 340	250.41	R442	-89 608.88	3 335 344.63
L443	-89 475.14	3 340	228.92	R443	-89 599.58	3 335 262.92
L444	-89 474.97	3 340	205.33	R444	-89 588.09	3 335 217.44
L445	-89 494.05	3 340	140.31	R445	-89 565.74	3 335 138.95
L446	-89 500.64	3 340	113.70	R446	-89 545.17	3 335 091.91
L447	-89 506.91	3 340	086.96	R447	-89 521.75	3 335 042.37
L448	-89 512.39	3 340	060.16	R448	-89 440.69	3 334 884.29
L449	-89 517.27	3 340	033.40	R449	-89 371.54	3 334 799.20
L450	-89 523.66	3 339	993.92	R450	-89 343.87	3 334 754.17
L451	-89 526.48	3 339	970.69	R451	-89 317.28	3 334 707.56
L452	-89 531.47	3 339	916.08	R452	-89 293.25	3 334 655.01
L453	-89 534.40	3 339	874.84	R453	-89 164.61	3 334 402.31
L454	-89 545.91	3 339	628.45	R454	-89 132.27	3 334 331.98
L455	-89 568.37	3 339	163.14	R455	-89 091.47	3 334 243.26
L456	-89 579.13	3 338	937.96	R456	-89 085.41	3 334 216.90
L457	-89 581.76	3 338	809.98	R457	-89 022.40	3 334 071.19
L458	-89 582.57	3 338	662.88	R458	-88 919.81	3 333 870.90
L459	-89 582.59	3 338	637.20	R459	-88 894.01	3 333 822.61

Vel Sheet	35	Van of	43	P1241/24
--------------	----	-----------	----	----------

PADRESERWE KOÖRDINATE / ROAD RESERVE CO-ORDINATES									
LINKERKANT/LEFT HAND SIDE					REGTERKANT/RIGHT HAND SIDE				
	Y		X	WG 17°		Y		X	
L460	-89 598.94	3	338	522.77	R460	-88 878.22	3	333	794.19
L461	-89 606.21	3	338	437.68	R461	-88 798.00	3	333	658.36
L462	-89 602.78	3	338	433.07	R462	-88 720.38	3	333	539.47
L463	-89 610.26	3	338	325.08	R463	-88 676.82	3	333	476.45
L464	-89 609.29	3	338	284.29	R464	-88 626.27	3	333	404.52
L465	-89 607.01	3	338	229.26	R465	-88 566.80	3	333	325.79
L466	-89 605.83	3	338	194.95	R466	-88 526.02	3	333	274.40
L467	-89 602.42	3	338	154.37	R467	-88 484.28	3	333	223.77
L468	-89 595.15	3	338	114.15	R468	-88 455.80	3	333	190.36
L469	-89 585.48	3	338	074.96	R469	-88 427.21	3	333	157.46
L470	-89 564.62	3	337	997.84	R470	-88 278.29	3	332	985.62
L471	-89 556.45	3	337	972.88	R471	-88 261.16	3	332	964.32
L472	-89 549.36	3	337	961.28	R472	-88 244.69	3	332	943.23
L473	-89 534.63	3	337	938.15	R473	-88 172.77	3	332	842.35
L474	-89 528.83	3	337	865.59	R474	-88 142.96	3	332	796.25
L475	-89 533.05	3	337	837.41	R475	-88 124.45	3	332	766.57
L476	-89 540.80	3	337	801.65	R476	-88 083.12	3	332	696.11
L477	-89 560.80	3	337	722.79	R477	-88 069.91	3	332	672.35
L478	-89 574.12	3	337	684.13	R478	-88 044.54	3	332	624.13
L479	-89 592.20	3	337	646.37	R479	-88 032.42	3	332	599.72
L480	-89 605.86	3	337	622.58	R480	-88 020.48	3	332	574.93
L481	-89 653.00	3	337	550.33	R481	-87 997.80	3	332	525.29
L482	-89 680.55	3	337	508.25	R482	-87 986.77	3	332	500.29
L483	-89 699.29	3	337	458.94	R483	-87 976.21	3	332	475.22
L484	-89 713.04	3	337	429.19	R484	-87 965.95	3	332	449.99
L485	-89 716.90	3	337	343.09	R485	-87 955.97	3	332	424.55
L486	-89 701.92	3	337	339.79	R486	-87 931.32	3	332	357.98
L487	-89 688.54	3	337	185.99	R487	-87 910.43	3	332	292.89
L488	-89 687.22	3	337	170.90	R488	-87 902.31	3	332	266.67
L489	-89 686.20	3	337	159.20	R489	-87 749.54	3	331	740.00
L490	-89 636.35	3	337	088.30	R490	-87 777.30	3	331	731.89
L491	-89 588.12	3	337	040.03	R491	-87 770.37	3	331	708.47
L492	-89 546.54	3	337	014.26	R492	-87 742.55	3	331	716.31
L493	-89 535.43	3	337	003.64	R493	-87 609.10	3	331	258.69
L494	-89 434.16	3	336	939.90	R494	-87 481.00	3	330	818.75
L495	-89 422.27	3	336	930.36	R495	-87 229.30	3	329	958.91
L496	-89 402.82	3	336	912.21	R496	-87 184.35	3	329	806.34
L497	-89 384.74	3	336	891.84	R497	-87 167.47	3	329	745.88
L498	-89 376.12	3	336	881.23	R498	-87 070.18	3	329	408.52
L499	-89 360.44	3	336	859.12	R499	-86 995.95	3	329	130.13
L500	-89 345.91	3	336	835.87	R500	-86 987.27	3	329	076.63
L501	-89 333.59	3	336	811.79	R501	-86 963.06	3	328	966.21
L502	-89 317.55	3	336	774.33	R502	-86 811.48	3	328	109.38
L503	-89 309.26	3	336	748.18	R503	-86 782.02	3	327	939.19
L504	-89 303.01	3	336	721.65	R504	-86 732.37	3	327	808.68
L505	-89 290.44	3	336	650.19	R505	-86 678.57	3	327	501.07
L506	-89 293.37	3	336	627.87	R506	-86 676.44	3	327	345.19
L507	-89 297.70	3	336	596.72	R507	-86 643.35	3	327	229.34
L508	-89 299.68	3	336	582.48	R508	-86 445.96	3	326	694.22
L509	-89 345.22	3	336	378.03	R509	-86 324.54	3	326	382.85
L510	-89 363.95	3	336	265.31	R510	-86 368.69	3	326	364.72

Vel Sheet	36	Van of	43	P1241/24
-----------	----	--------	----	----------



PADRESERWE KOÖRDINATE / ROAD RESERVE CO-ORDINATES						
LINKERKANT/LEFT HAND SIDE				REGTERKANT/RIGHT HAND SIDE		
	Y	X	WG 17°		Y	X
L511	-89 391.85	3 336	181.28	R511	-86 360.14	3 326 342.30
L512	-89 403.93	3 336	126.94	R512	-86 315.71	3 326 360.07
L513	-89 439.42	3 335	969.49	R513	-86 277.74	3 326 258.33
L514	-89 461.02	3 335	887.50	R514	-86 137.67	3 325 902.44
L515	-89 482.65	3 335	782.04	R515	-85 997.09	3 325 515.40
L516	-89 495.28	3 335	712.55	R516	-85 863.71	3 325 163.31
L517	-89 536.76	3 335	549.11	R517	-85 837.44	3 325 095.06
L518	-89 548.90	3 335	434.41	R518	-85 783.65	3 324 949.81
L519	-89 546.20	3 335	348.15	R519	-85 730.00	3 324 742.28
L520	-89 542.26	3 335	312.08	R520	-85 724.18	3 324 703.73
L521	-89 537.89	3 335	284.98	R521	-85 716.36	3 324 652.40
L522	-89 532.64	3 335	258.22	R522	-85 706.26	3 324 531.54
L523	-89 529.97	3 335	245.86	R523	-85 705.85	3 324 440.50
L524	-89 519.77	3 335	207.86	R524	-85 717.81	3 324 430.03
L525	-89 511.84	3 335	181.68	R525	-85 715.38	3 324 404.22
L526	-89 507.42	3 335	168.56	R526	-85 708.36	3 324 367.76
L527	-89 487.29	3 335	115.90	R527	-85 716.38	3 324 176.82
L528	-89 481.46	3 335	102.92	R528	-85 718.79	3 324 152.58
L529	-89 470.31	3 335	079.66	R529	-85 720.77	3 324 052.17
L530	-89 318.93	3 334	786.04	R530	-85 719.48	3 324 012.50
L531	-89 108.70	3 334	381.45	R531	-85 714.43	3 323 950.51
L532	-89 058.12	3 334	291.53	R532	-85 697.88	3 323 895.20
L533	-89 000.39	3 334	166.58	R533	-85 646.95	3 323 752.31
L534	-88 953.81	3 334	076.26	R534	-85 612.04	3 323 665.20
L535	-88 930.42	3 334	037.73	R535	-85 575.15	3 323 609.90
L536	-88 911.57	3 333	986.23	R536	-85 493.35	3 323 490.81
L537	-88 766.41	3 333	728.68	R537	-85 373.74	3 323 336.89
L538	-88 725.91	3 333	664.30	R538	-85 347.69	3 323 303.05
L539	-88 685.23	3 333	601.34	R539	-85 211.50	3 323 138.07
L540	-88 666.66	3 333	573.94	R540	-85 170.33	3 323 090.88
L541	-88 608.38	3 333	494.57	R541	-85 140.02	3 323 050.23
L542	-88 588.83	3 333	466.43	R542	-85 118.25	3 323 026.14
L543	-88 578.22	3 333	446.97	R543	-85 036.43	3 322 898.96
L544	-88 460.43	3 333	294.28	R544	-85 000.24	3 322 805.23
L545	-88 339.32	3 333	153.89	R545	-84 937.52	3 322 620.89
L546	-88 275.71	3 333	081.94	R546	-84 931.87	3 322 565.76
L547	-88 240.56	3 333	040.08	R547	-84 936.06	3 322 465.76
L548	-88 206.45	3 332	997.28	R548	-84 947.15	3 322 401.52
L549	-88 173.28	3 332	953.42	R549	-84 977.59	3 322 279.15
L550	-88 126.07	3 332	887.04	R550	-84 992.78	3 322 218.27
L551	-88 095.95	3 332	841.19	R551	-85 004.95	3 322 165.24
L552	-88 056.66	3 332	777.76	R552	-85 021.78	3 322 032.05
L553	-88 029.32	3 332	730.51	R553	-85 008.57	3 321 907.00
L554	-88 016.10	3 332	706.66	R554	-84 964.40	3 321 770.09
L555	-87 990.50	3 332	658.40	R555	-84 953.92	3 321 728.24
L556	-87 966.28	3 332	609.50	R556	-84 937.94	3 321 664.40
L557	-87 954.40	3 332	584.42	R557	-84 885.17	3 321 476.12
L558	-87 932.19	3 332	534.68	R558	-84 850.32	3 321 360.39
L559	-87 921.44	3 332	509.59	R559	-84 772.82	3 321 146.43
L560	-87 910.97	3 332	484.20	R560	-84 701.28	3 321 023.49
L561	-87 900.85	3 332	458.79	R561	-84 656.65	3 320 885.10

Vel Sheet	37	Van of	43	P1241/24
-----------	----	--------	----	----------

PADRESERWE KOÖRDINATE / ROAD RESERVE CO-ORDINATES					
LINKERKANT/LEFT HAND SIDE			REGTERKANT/RIGHT HAND SIDE		
	Y	X	WG 17°		X
L562	-87 881.70	3 332	407.71	R562	-84 620.62 3 320 742.76
L563	-87 872.72	3 332	381.93	R563	-84 582.87 3 320 641.44
L564	-87 848.52	3 332	307.26	R564	-84 590.91 3 320 555.72
L565	-87 755.23	3 331	988.37	R565	-84 559.71 3 320 365.34
L566	-87 690.44	3 331	766.27	R566	-84 541.70 3 320 142.04
L567	-87 659.03	3 331	763.21	R567	-84 517.93 3 319 813.70
L568	-87 651.61	3 331	749.24	R568	-84 487.26 3 319 771.58
L569	-87 677.83	3 331	723.25	R569	-84 489.79 3 319 735.31
L570	-87 547.98	3 331	276.08	R570	-84 487.89 3 319 685.01
L571	-87 309.36	3 330	456.23	R571	-84 504.31 3 319 512.57
L572	-87 305.93	3 330	442.85	R572	-84 529.28 3 319 486.09
L573	-87 303.30	3 330	429.56	R573	-84 545.66 3 319 417.46
L574	-87 301.19	3 330	416.69	R574	-84 573.95 3 319 342.65
L575	-87 297.61	3 330	402.41	R575	-84 626.92 3 319 259.71
L576	-87 293.26	3 330	389.50	R576	-84 658.12 3 319 216.07
L577	-87 283.02	3 330	364.37	R577	-84 712.55 3 319 150.81
L578	-87 278.65	3 330	351.40	R578	-84 855.12 3 319 035.74
L579	-87 189.14	3 330	042.13	R579	-85 839.66 3 318 411.91
L580	-87 163.66	3 329	955.70	R580	-85 860.06 3 318 422.56
L581	-87 039.05	3 329	551.31	R581	-85 885.01 3 318 382.88
L582	-87 030.39	3 329	525.70	R582	-86 702.10 3 317 864.70
L583	-87 027.12	3 329	512.53	R583	-86 833.29 3 317 781.45
L584	-87 017.74	3 329	458.33	R584	-86 935.66 3 317 707.50
L585	-87 011.57	3 329	432.20	R585	-87 045.88 3 317 598.91
L586	-86 993.05	3 329	366.61	R586	-87 078.56 3 317 560.54
L587	-86 979.09	3 329	314.10	R587	-87 152.51 3 317 452.36
L588	-86 963.55	3 329	261.97	R588	-87 257.82 3 317 193.51
L589	-86 956.65	3 329	235.61	R589	-87 279.21 3 317 046.66
L590	-86 946.88	3 329	195.91	R590	-87 279.45 3 317 025.34
L591	-86 911.35	3 329	028.17	R591	-87 279.75 3 316 997.40
L592	-86 884.73	3 328	894.77	R592	-87 281.68 3 316 926.33
L593	-86 839.96	3 328	667.57	R593	-87 273.07 3 316 839.93
L594	-86 834.78	3 328	630.95	R594	-87 257.04 3 316 759.06
L595	-86 828.73	3 328	568.11	R595	-87 215.40 3 316 624.48
L596	-86 826.07	3 328	554.69	R596	-86 961.40 3 315 978.92
L597	-86 820.13	3 328	528.21	R597	-86 879.98 3 315 725.91
L598	-86 775.20	3 328	271.93	R598	-86 846.30 3 315 570.89
L599	-86 768.34	3 328	231.59	R599	-86 806.26 3 315 398.67
L600	-86 746.50	3 328	125.25	R600	-86 747.89 3 315 102.96
L601	-86 739.57	3 328	084.79	R601	-86 701.59 3 314 876.88
L602	-86 732.12	3 328	026.11	R602	-86 659.62 3 314 716.03
L603	-86 653.25	3 327	576.04	R603	-86 599.95 3 314 533.44
L604	-86 634.05	3 327	467.99	R604	-86 556.31 3 314 419.13
L605	-86 626.14	3 327	428.73	R605	-86 168.50 3 313 464.76
L606	-86 610.99	3 327	362.67	R606	-86 002.58 3 313 056.29
L607	-86 597.11	3 327	309.80	R607	-85 983.79 3 313 003.96
L608	-86 578.32	3 327	244.46	R608	-85 956.09 3 312 941.88
L609	-86 570.63	3 327	219.28	R609	-85 903.76 3 312 813.25
L610	-86 561.61	3 327	192.76	R610	-85 867.55 3 312 727.06
L611	-86 541.37	3 327	136.11	R611	-85 823.30 3 312 627.16
L612	-86 531.98	3 327	110.39	R612	-85 788.65 3 312 552.74

Vel Sheet	38	Van of	43	P1241/24
-----------	----	--------	----	----------

PADRESERWE KOÖRDINATE / ROAD RESERVE CO-ORDINATES					
LINKERKANT/LEFT HAND SIDE			REGTERKANT/RIGHT HAND SIDE		
	Y	X	WG 17°	Y	X
L613	-86 272.46	3 326	423.96	R613	-85 739.88 3 312 454.21
L614	-86 262.37	3 326	414.94	R614	-85 697.13 3 312 372.74
L615	-86 233.81	3 326	422.14	R615	-85 652.60 3 312 291.25
L616	-86 225.75	3 326	392.40	R616	-85 586.82 3 312 178.42
L617	-86 251.99	3 326	381.43	R617	-85 529.75 3 312 084.75
L618	-86 254.24	3 326	375.76	R618	-85 395.28 3 311 880.78
L619	-86 066.08	3 325	877.80	R619	-85 379.34 3 311 860.09
L620	-85 819.40	3 325	225.83	R620	-84 807.81 3 311 023.37
L621	-85 809.03	3 325	200.66	R621	-84 760.20 3 310 946.96
L622	-85 786.95	3 325	152.02	R622	-84 740.93 3 310 915.78
L623	-85 778.67	3 325	128.02	R623	-84 690.73 3 310 818.90
L624	-85 770.50	3 325	099.63	R624	-84 675.17 3 310 783.43
L625	-85 766.32	3 325	086.94	R625	-84 661.83 3 310 752.16
L626	-85 757.10	3 325	061.02	R626	-84 653.05 3 310 731.57
L627	-85 733.37	3 324	997.23	R627	-84 621.54 3 310 642.30
L628	-85 723.34	3 324	969.04	R628	-84 582.69 3 310 497.42
L629	-85 671.47	3 324	779.33	R629	-84 518.12 3 310 289.41
L630	-85 660.24	3 324	713.38	R630	-84 546.10 3 310 264.57
L631	-85 642.74	3 324	545.44	R631	-84 477.64 3 309 797.56
L632	-85 642.46	3 324	447.90	R632	-84 417.71 3 309 385.91
L633	-85 648.41	3 324	307.72	R633	-84 443.13 3 309 301.93
L634	-85 656.90	3 324	102.67	R634	-84 400.47 3 309 177.15
L635	-85 655.54	3 324	018.38	R635	-84 378.80 3 309 126.29
L636	-85 645.20	3 323	936.27	R636	-84 353.45 3 309 033.13
L637	-85 625.61	3 323	856.09	R637	-84 365.15 3 308 802.84
L638	-85 595.21	3 323	773.54	R638	-84 367.28 3 308 792.59
L639	-85 557.08	3 323	698.29	R639	-84 372.80 3 308 771.59
L640	-85 507.17	3 323	622.93	R640	-84 377.30 3 308 761.05
L641	-85 213.54	3 323	225.44	R641	-84 383.71 3 308 750.73
L642	-85 159.84	3 323	149.43	R642	-84 438.92 3 308 681.92
L643	-85 130.07	3 323	113.14	R643	-84 710.47 3 308 032.70
L644	-85 065.37	3 323	030.34	R644	-84 849.79 3 307 698.89
L645	-85 006.17	3 322	943.15	R645	-84 877.02 3 307 636.84
L646	-84 977.26	3 322	900.55	R646	-84 901.28 3 307 575.60
L647	-84 976.96	3 322	900.11	R647	-84 930.69 3 307 503.97
L648	-84 938.02	3 322	818.86	R648	-84 958.01 3 307 426.42
L649	-84 909.28	3 322	739.68	R649	-84 981.48 3 307 321.49
L650	-84 885.51	3 322	647.96	R650	-84 990.41 3 307 230.84
L651	-84 877.20	3 322	565.48	R651	-84 992.78 3 307 132.43
L652	-84 876.03	3 322	522.71	R652	-84 987.10 3 307 055.95
L653	-84 875.72	3 322	503.99	R653	-84 975.56 3 306 981.15
L654	-84 874.75	3 322	476.44	R654	-84 958.40 3 306 907.03
L655	-84 883.86	3 322	389.24	R655	-84 933.73 3 306 822.04
L656	-84 899.38	3 322	323.32	R656	-84 923.11 3 306 767.19
L657	-84 924.49	3 322	231.71	R657	-84 849.20 3 306 528.82
L658	-84 946.89	3 322	126.32	R658	-84 680.57 3 305 944.98
L659	-84 953.73	3 322	034.33	R659	-84 596.14 3 305 646.69
L660	-84 950.52	3 321	939.38	R660	-84 529.76 3 305 418.00
L661	-84 929.90	3 321	839.84	R661	-84 336.08 3 304 748.12
L662	-84 906.42	3 321	760.96	R662	-84 262.33 3 304 546.38
L663	-84 850.44	3 321	601.45	R663	-84 125.27 3 304 369.39

Vel Sheet	39	Van of	43	P1241/24
--------------	----	-----------	----	----------

PADRESERWE KOÖRDINATE / ROAD RESERVE CO-ORDINATES					
LINKERKANT/LEFT HAND SIDE			REGTERKANT/RIGHT HAND SIDE		
	Y	X	WG 17°	Y	X
L664	-84 831.54	3 321 556.81		R664	-82 513.88 3 302 728.28
L665	-84 796.61	3 321 453.84		R665	-82 351.07 3 302 467.83
L666	-84 690.56	3 321 171.11		R666	-82 291.76 3 302 257.66
L667	-84 628.38	3 321 002.57		R667	-82 300.62 3 301 778.45
L668	-84 594.75	3 320 898.11		R668	-82 299.60 3 301 735.34
L669	-84 557.44	3 320 754.24		R669	-82 296.72 3 301 498.00
L670	-84 538.75	3 320 654.80		R670	-82 290.88 3 301 389.11
L671	-84 517.64	3 320 515.29		R671	-82 298.75 3 301 355.35
L672	-84 503.02	3 320 411.78		R672	-82 301.83 3 301 098.03
L673	-84 488.31	3 320 277.75		R673	-82 342.78 3 301 075.47
L674	-84 477.45	3 320 135.32		R674	-82 332.44 3 301 053.78
L675	-84 472.44	3 320 055.50		R675	-82 301.98 3 301 072.34
L676	-84 458.88	3 319 819.75		R676	-82 302.10 3 301 040.92
L677	-84 455.47	3 319 765.75		R677	-82 298.81 3 300 941.59
L678	-84 452.88	3 319 719.97		R678	-82 282.62 3 300 812.76
L679	-84 447.27	3 319 673.45		R679	-82 254.34 3 300 684.79
L680	-84 456.96	3 319 503.58		R680	-82 214.63 3 300 560.51
L681	-84 485.68	3 319 410.52		R681	-82 164.58 3 300 442.85
L682	-84 515.43	3 319 333.51		R682	-82 102.42 3 300 327.30
L683	-84 558.43	3 319 247.89		R683	-82 058.36 3 300 258.80
L684	-84 610.15	3 319 170.63		R684	-81 770.77 3 299 861.51
L685	-84 706.13	3 319 058.69		R685	-81 713.64 3 299 776.31
L686	-84 793.85	3 318 999.60		R686	-81 665.14 3 299 688.90
L687	-84 835.86	3 318 972.64		R687	-81 623.93 3 299 597.44
L688	-84 909.85	3 318 925.17		R688	-81 590.21 3 299 504.40
L689	-85 729.23	3 318 407.03		R689	-81 528.93 3 299 295.97
L690	-85 766.85	3 318 383.14		R690	-81 423.38 3 298 936.21
L691	-85 795.00	3 318 361.79		R691	-81 394.63 3 298 811.40
L692	-85 841.70	3 318 335.30		R692	-81 367.53 3 298 748.21
L693	-86 261.65	3 318 069.17		R693	-81 337.35 3 298 645.10
L694	-86 292.16	3 318 040.81		R694	-81 287.16 3 298 480.87
L695	-86 337.71	3 318 020.99		R695	-81 221.04 3 298 248.74
L696	-86 678.91	3 317 804.73		R696	-81 190.59 3 298 146.16
L697	-86 801.39	3 317 727.15		R697	-81 046.96 3 297 655.73
L698	-86 884.42	3 317 667.18		R698	-80 905.29 3 297 174.41
L699	-86 965.18	3 317 593.24		R699	-80 840.36 3 296 953.52
L700	-87 027.48	3 317 521.76		R700	-80 714.96 3 296 527.94
L701	-87 089.14	3 317 431.36		R701	-80 682.04 3 296 393.93
L702	-87 134.52	3 317 346.48		R702	-80 659.48 3 296 270.27
L703	-87 175.52	3 317 238.71		R703	-80 646.41 3 296 141.16
L704	-87 199.58	3 317 146.23		R704	-80 642.27 3 296 010.16
L705	-87 214.08	3 317 039.53		R705	-80 640.51 3 295 886.07
L706	-87 216.79	3 316 944.31		R706	-80 644.58 3 295 686.38
L707	-87 207.69	3 316 841.35		R707	-80 644.94 3 295 632.77
L708	-87 186.26	3 316 737.60		R708	-80 645.13 3 295 471.92
L709	-87 155.78	3 316 644.05		R709	-80 644.98 3 295 397.22
L710	-86 981.92	3 316 200.85		R710	-80 647.03 3 295 145.46
L711	-86 963.67	3 316 165.24		R711	-80 654.56 3 295 047.99
L712	-86 869.79	3 315 913.72		R712	-80 671.23 3 294 955.21
L713	-86 820.99	3 315 772.72		R713	-80 698.90 3 294 862.67
L714	-86 789.19	3 315 629.94		R714	-80 734.09 3 294 773.25

Vel Sheet	40	Van of	43	P1241/24
-----------	----	--------	----	----------

PADRESERWE KOÖRDINATE / ROAD RESERVE CO-ORDINATES					
LINKERKANT/LEFT HAND SIDE			REGTERKANT/RIGHT HAND SIDE		
	Y	X	WG 17°	Y	X
L715	-86 777.88	3 315	576.49	R715	-80 763.35 3 294 717.30
L716	-86 751.77	3 315	444.52	R716	-80 781.44 3 294 751.84
L717	-86 690.99	3 315	139.31	R717	-80 802.92 3 294 740.35
L718	-86 663.18	3 314	998.56	R718	-80 778.59 3 294 690.25
L719	-86 638.05	3 314	883.62	R719	-80 915.51 3 294 446.09
L720	-86 596.04	3 314	725.79	R720	-80 967.66 3 294 363.94
L721	-86 540.99	3 314	556.81	R721	-81 057.37 3 294 245.85
L722	-86 496.34	3 314	439.63	R722	-81 799.92 3 293 052.08
L723	-86 394.58	3 314	189.32	R723	-82 055.26 3 292 642.12
L724	-86 039.25	3 313	314.77	R724	-82 635.53 3 291 709.42
L725	-85 844.84	3 312	836.69	R725	-82 736.92 3 291 558.15
L726	-85 808.02	3 312	748.50	R726	-82 825.74 3 291 437.32
L727	-85 763.79	3 312	649.24	R727	-82 961.90 3 291 277.41
L728	-85 740.34	3 312	599.46	R728	-84 376.06 3 289 837.94
L729	-85 680.38	3 312	477.22	R729	-84 566.99 3 289 643.28
L730	-85 638.62	3 312	397.73	R730	-84 612.71 3 289 597.39
L731	-85 599.30	3 312	326.02	R731	-84 885.07 3 289 320.00
L732	-85 528.18	3 312	209.45	R732	-84 994.35 3 289 209.58
L733	-85 465.00	3 312	108.09	R733	-85 387.60 3 288 814.19
L734	-85 367.25	3 311	954.73	R734	-85 461.75 3 288 734.55
L735	-85 341.74	3 311	982.86	R735	-85 506.73 3 288 688.00
L736	-85 327.01	3 311	972.05	R736	-85 609.65 3 288 581.50
L737	-85 351.51	3 311	931.75	R737	-85 638.10 3 288 554.79
L738	-85 283.31	3 311	831.63	R738	-85 731.31 3 288 460.38
L739	-85 127.66	3 311	603.68	R739	-85 749.24 3 288 442.23
L740	-84 756.33	3 311	060.07	R740	-85 988.41 3 288 199.23
L741	-84 688.45	3 310	950.91	R741	-86 303.84 3 287 879.13
L742	-84 632.88	3 310	843.82	R742	-86 320.72 3 287 862.01
L743	-84 584.97	3 310	730.40	R743	-86 464.99 3 287 715.02
L744	-84 562.81	3 310	663.14	R744	-86 586.24 3 287 583.52
L745	-84 490.22	3 310	383.06	R745	-86 609.15 3 287 548.03
L746	-84 275.35	3 308	884.28	R746	-86 696.44 3 287 413.88
L747	-84 923.23	3 307	306.10	R747	-86 754.91 3 287 305.62
L748	-84 895.67	3 306	913.21	R748	-86 776.04 3 287 258.74
L749	-84 274.68	3 304	764.27	R749	-86 805.84 3 287 191.15
L750	-84 078.92	3 304	411.71	R750	-86 849.10 3 287 067.81
L751	-82 372.54	3 302	675.49	R751	-86 954.57 3 286 749.63
L752	-82 257.42	3 302	413.29	R752	-87 293.62 3 285 730.42
L753	-82 226.67	3 302	207.11	R753	-87 316.30 3 285 650.84
L754	-82 221.85	3 301	851.18	R754	-87 333.60 3 285 557.21
L755	-82 214.08	3 301	784.96	R755	-87 341.62 3 285 461.71
L756	-82 216.01	3 301	753.52	R756	-87 339.88 3 285 366.24
L757	-82 231.86	3 301	627.57	R757	-87 328.84 3 285 270.44
L758	-82 237.79	3 301	136.38	R758	-87 308.34 3 285 176.43
L759	-82 203.93	3 301	159.15	R759	-87 270.24 3 285 063.99
L760	-82 184.06	3 301	145.34	R760	-87 230.42 3 284 979.71
L761	-82 238.16	3 301	104.18	R761	-86 962.58 3 284 474.46
L762	-82 238.65	3 301	071.08	R762	-86 920.13 3 284 382.09
L763	-82 236.38	3 300	991.98	R763	-86 887.26 3 284 276.48
L764	-82 233.55	3 300	941.22	R764	-86 870.73 3 284 196.19
L765	-82 230.55	3 300	898.86	R765	-86 860.60 3 284 097.84

Vel	41	Van	43	P1241/24
Sheet		of		

PADRESERWE KOÖRDINATE / ROAD RESERVE CO-ORDINATES					
LINKERKANT/LEFT HAND SIDE			REGTERKANT/RIGHT HAND SIDE		
	Y	X	WG 17°	Y	X
L766	-82 219.42	3 300	825.90	R766	-86 862.96 3 284 040.53
L767	-82 192.57	3 300	703.74	R767	-86 865.48 3 284 000.46
L768	-82 156.99	3 300	592.31	R768	-86 877.84 3 283 905.37
L769	-82 107.21	3 300	472.36	R769	-86 870.94 3 283 834.72
L770	-82 049.33	3 300	363.43	R770	-86 876.40 3 283 782.58
L771	-82 022.41	3 300	321.30	R771	-86 866.04 3 283 686.02
L772	-82 003.51	3 300	295.26	R772	-86 829.36 3 283 516.43
L773	-81 978.11	3 300	255.60	R773	-86 809.25 3 283 423.35
L774	-81 712.76	3 299	891.83	R774	-86 815.17 3 283 401.40
L775	-81 653.91	3 299	803.10	R775	-86 843.15 3 283 393.00
L776	-81 603.81	3 299	710.82	R776	-86 835.88 3 283 369.46
L777	-81 561.39	3 299	614.48	R777	-86 808.49 3 283 377.93
L778	-81 527.27	3 299	514.17	R778	-86 786.82 3 283 372.51
L779	-81 493.96	3 299	400.68	R779	-86 701.86 3 283 270.55
L780	-81 492.54	3 299	387.41	R780	-86 569.48 3 283 078.61
L781	-81 493.55	3 299	374.26	R781	-86 485.88 3 282 939.43
L782	-81 481.58	3 299	358.30		
L783	-81 343.35	3 298	890.42		
L784	-81 315.97	3 298	822.37		
L785	-81 311.33	3 298	805.77		
L786	-81 300.00	3 298	768.62		
L787	-81 285.13	3 298	736.61		
L788	-81 278.38	3 298	669.33		
L789	-81 159.41	3 298	265.58		
L790	-81 123.18	3 298	142.92		
L791	-81 118.36	3 298	126.40		
L792	-81 114.29	3 298	105.17		
L793	-81 102.38	3 298	070.48		
L794	-80 837.07	3 297	168.78		
L795	-80 787.39	3 297	000.34		
L796	-80 653.83	3 296	546.21		
L797	-80 644.48	3 296	512.58		
L798	-80 622.16	3 296	421.76		
L799	-80 596.87	3 296	287.59		
L800	-80 584.04	3 296	214.10		
L801	-80 581.96	3 296	199.19		
L802	-80 573.34	3 295	752.47		
L803	-80 570.73	3 295	641.36		
L804	-80 568.91	3 295	542.46		
L805	-80 582.76	3 295	387.67		
L806	-80 584.61	3 295	131.42		
L807	-80 586.86	3 295	043.11		
L808	-80 613.54	3 294	906.76		
L809	-80 664.33	3 294	755.48		
L810	-80 723.53	3 294	657.06		
L811	-80 709.71	3 294	631.97		
L812	-80 742.19	3 294	577.34		
L813	-80 763.10	3 294	598.43		
L814	-81 010.33	3 294	201.33		
L815	-81 387.11	3 293	595.56		
L816	-81 374.23	3 293	585.51		
LINKERKANT/LEFT HAND SIDE					
	Y	X			
L817	-81 468.28	3 293	428.72		
L818	-81 508.05	3 293	400.96		
L819	-82 034.24	3 292	555.44		
L820	-82 277.67	3 292	164.27		
L821	-82 522.98	3 291	769.82		
L822	-82 581.45	3 291	676.01		
L823	-82 685.08	3 291	520.77		
L824	-82 777.80	3 291	395.46		
L825	-82 833.44	3 291	330.23		
L826	-82 999.47	3 291	145.03		
L827	-83 092.72	3 291	050.60		
L828	-83 456.74	3 290	680.78		
L829	-83 458.74	3 290	679.85		
L830	-83 464.37	3 290	674.15		
L831	-83 464.52	3 290	672.77		
L832	-83 996.77	3 290	131.61		
L833	-84 535.96	3 289	584.25		
L834	-84 782.73	3 289	333.50		
L835	-85 072.15	3 289	039.99		
L836	-85 350.07	3 288	757.09		
L837	-85 558.29	3 288	545.82		
L838	-85 580.11	3 288	523.71		
L839	-85 571.60	3 288	509.11		
L840	-85 579.55	3 288	487.17		
L841	-85 589.18	3 288	481.99		

Vel Sheet	42	Van of	43	P1241/24
-----------	----	--------	----	----------

PADRESERWE KOÖRDINATE / ROAD RESERVE CO-ORDINATES					
LINKERKANT/LEFT HAND SIDE			LINKERKANT/LEFT HAND SIDE		
	Y	X	WG 17°	Y	X
L842	-85 600.70	3 288 502.62	L893	-86 419.78	3 282 963.65
L843	-85 677.65	3 288 424.02			
L844	-85 987.82	3 288 109.08			
L845	-86 271.86	3 287 820.72			
L846	-86 414.12	3 287 676.18			
L847	-86 469.46	3 287 615.42			
L848	-86 498.15	3 287 583.91			
L849	-86 546.15	3 287 524.67			
L850	-86 574.86	3 287 484.96			
L851	-86 640.59	3 287 383.88			
L852	-86 697.78	3 287 278.03			
L853	-86 746.53	3 287 167.89			
L854	-86 774.85	3 287 089.96			
L855	-87 050.18	3 286 261.11			
L856	-87 047.10	3 286 255.19			
L857	-87 023.88	3 286 251.15			
L858	-87 024.13	3 286 246.09			
L859	-87 048.70	3 286 250.27			
L860	-87 055.09	3 286 246.14			
L861	-87 233.17	3 285 711.17			
L862	-87 254.29	3 285 636.94			
L863	-87 269.46	3 285 556.08			
L864	-87 278.13	3 285 459.84			
L865	-87 276.70	3 285 370.14			
L866	-87 266.40	3 285 281.41			
L867	-87 251.82	3 285 215.26			
L868	-87 209.98	3 285 088.73			
L869	-87 174.36	3 285 008.98			
L870	-86 906.71	3 284 504.16			
L871	-86 873.65	3 284 435.45			
L872	-86 846.15	3 284 364.45			
L873	-86 825.01	3 284 291.41			
L874	-86 809.85	3 284 216.80			
L875	-86 800.73	3 284 141.36			
L876	-86 797.83	3 284 063.28			
L877	-86 798.79	3 283 866.41			
L878	-86 794.03	3 283 782.13			
L879	-86 784.93	3 283 715.15			
L880	-86 763.49	3 283 621.70			
L881	-86 745.27	3 283 569.56			
L882	-86 719.98	3 283 519.59			
L883	-86 688.92	3 283 473.58			
L884	-86 676.28	3 283 456.95			
L885	-86 656.26	3 283 451.98			
L886	-86 623.84	3 283 462.20			
L887	-86 615.00	3 283 438.58			
L888	-86 655.55	3 283 425.78			
L889	-86 651.83	3 283 405.68			
L890	-86 639.45	3 283 366.29			
L891	-86 623.26	3 283 322.84			
L892	-86 602.66	3 283 281.36			

Vel Sheet	43	Van of	43	P1241/24
--------------	----	-----------	----	----------

Printed by and obtainable from the Government Printer, Bosman Street, Private Bag X85, Pretoria, 0001  
Contact Centre Tel: 012-748 6200. eMail: [info.egazette@gpw.gov.za](mailto:info.egazette@gpw.gov.za)  
Publications: Tel: (012) 748 6053, 748 6061, 748 6065